

WNXX

Review Magazine Issue 038, June 2008

ISSN 1757-3157



BR Blue 87002 at Long Marston 06/06/08
Photo: K Singleton / ETS



Contents

Location Amendments, Additions & Disposals: 2-3
News Review: 4-16
Stock Changes: 17-19
Locations List: 20-22

37423 approaches Stafford 03/06/08 with 25901
20110 31108 and 37037 en route to the K&WVR
in tow. Photo: K Woods

Stored / Withdrawn

08428 WNTS Doncaster Carr (later reinstated)
 08664 WNTS Doncaster Carr
 08770 WNTS Margam (later Newport Docks)
 08798 WNTS Doncaster Carr
 08951 WNTS Margam (later reinstated)
 09006 WNTS Doncaster Carr
 09107 WNTS Doncaster Carr
 90034 WNTR Crewe EMD

Re-listed / Other Additions

37201 Barrow Hill
 47295 MoD Ashchurch
 50040 Sims Metals, Halesowen

Revised

92010 France – Wembley Yard – Crewe EMD (unknown dates) (later returned to France)

Relocated

08770 WNTS Margam – Newport Docks
 31113 Chinnor & Princes Risborough Railway – Kingsbury
 33202 CRRH Gloucester – Tyseley
 37087 XHHP Carlisle Kingmoor – York – K&WVR – Carlisle Kingmoor
 37229 XHSS Carnforth – Carlisle Kingmoor – active
 37406 WNTS Toton – Bescot Yard – Eastleigh
 37407 WNSO Mossend – Crewe EMD – Churnet Valley Railway (into preservation)
 37410 WNTS Toton – Bescot Yard – Eastleigh
 37416 WNXX Toton – Bescot Yard – Eastleigh
 37424 WNSO Motherwell – Crewe EMD – Churnet Valley Railway (into preservation)
 37425 WNTS Allerton – Warrington
 37682 HNRS LaFarge, Hope – Barrow Hill
 37894 WNSO Tyne Yard – M1 Woodall Services – Kingsbury
 47550 Immingham Railfreight Terminal – Heanor, Langley Mill – Goodman's, Sutton Coldfield
 47772 WNSO Margam – Carnforth
 47791 MBDL Eastleigh Yard – Barrow Hill
 47811 DFLH Crewe Basford Hall – Crewe LNWR
 47830 DFLH Crewe Basford Hall – Crewe LNWR – Crewe Basford Hall
 57004 XHHP Crewe Gresty Bridge – Crewe LNWR
 60060 WNTS Toton – Bescot Yard – Crewe EMD
 60064 WNTS Immingham – ?? (en route Toton)
 60098 WNTS Immingham – Toton
 86218 SAXL Brush Traction, Loughborough – Long Marston
 86232 SAXL Brush Traction, Loughborough – Long Marston
 87007 SBXL Crewe LNWR – Warrington – Wembley Yard – Dollands Moor – Europe (exported)
 87008 SBXL Crewe LNWR – Warrington – Wembley Yard – Dollands Moor – Europe (exported)
 87026 SBXL Crewe LNWR – Warrington – Wembley Yard – Dollands Moor – Europe (exported)
 92010 WNWX Crewe EMD – Wembley Yard – France
 92044 WNWX Crewe EMD – Brush Traction, Loughborough

Reinstated

08428 WSSN (Doncaster Carr)
 08617 ATLO (Wembley HRD)
 08888 WSSN (active / Millerhill)
 08934 ATLO (Wembley HRD)
 08951 WSSI (Margam)
 37712 MBDL (Carnforth)
 67022 WFMU (Toton)
 90029 WFMU (Crewe EMD)

Preservation / Private Ownership / Industrial

08447 Deanside Transit, Glasgow
 37407 WNSO Churnet Valley Railway
 37424 WNSO Churnet Valley Railway

Exported

87007 SBXL France, for Bulgaria
87008 SBXL France, for Bulgaria
87026 SBXL France, for Bulgaria

Rebuilt

None

Disposals

08946 Goodman's, Sutton Coldfield (May)



01/06/08

The cab of 47758 at Kingsbury 01/06/08
Photo: S Greer

08888...

Until recently located at Doncaster Carr for repairs 08888 (WNTS) has been transported up to Millerhill where it has been put to use as a replacement for 08798 (WSSN) which has been taken away to Doncaster for attention.

31113...

A little later than initially planned the transfer of 31113 from Chinnor to Kingsbury is set to take place tomorrow by road. 31113 has been positioned ready for collection.

02/06/08

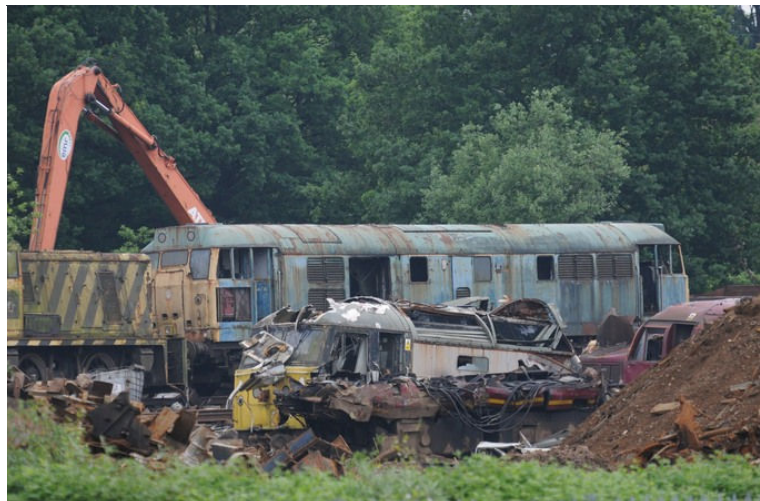
97301 & 97303...

97303 (QETS), the former 37178, has made its mainline debut today with a couple of trips from Barrow Hill to Derby and back with 97301.

03/06/08

31113...

As per schedule 31113 was transported by road from Chinnor to Kingsbury yesterday. It was noted traversing the M42 near Tamworth en route.



Former ELR resident 31467 at Kingsbury 01/06/08
Photo: S Greer

EWS Shunter purge...

Another reduction with their operational shunter fleet sees four Class 08s and two Class 09s being put to store WNTS. Binned this time around are 08428 08664 08798 08951 09006 and 09107, all at Doncaster Carr and from the WSSN pool except 08951 which is at Margam and was allocated to the WSSI pool. 08888 recently returned to use at Millerhill has been reallocated to the WSSN pool from WNTS.

DRS Notes...

Due at the Keighley & Worth Valley Railway 37087 (XHHP) with covered nameplates left Carlisle today to York via the Haverton Hill workings for forwarding to Keighley tomorrow. 37229 (XHSS) which, it transpires, has been to Carnforth for cosmetic attention, ran north light engine in plain DRS blue with its nameplates repositioned in readiness for application of the larger 'compass' style logos.

WCRC Developments...

37712 due to undergo a mainline test sometime shortly has been noted at Carnforth in full WCRC maroon whilst 37706 has been started and moved under its own power at Carnforth today for the first time since arrival from Healey Mills in January.

43080...

Half the Grand Central power car fleet is now at Brush Traction following the transfer to Loughborough from Heaton today by road of 43080 (GCHP). It joins 43067 and 43068 already at Brush.

56311...

Today's 4090 Doncaster to Grain service had 56301 (RCJA) and 56311 (RVEL) at the helm. This is 56311's first workings for Fastline after several test runs from Derby in the past couple of weeks.

Choppers and a Tractor...

With the LaFarge ballast job now complete 20901 and 20905 (both HNRL) are set to return to Barrow Hill from Hope on the 5th. The convoy, provisionally due off Earle's at about 08:30, is to have 37682 (HNRS) in tow.

04/06/08

37s on the move...

A little later than initially proposed 37406 (WNTS) 37410 (WNTS) and 37416 (WNXX) are at last on the move to Eastleigh. They were towed from Toton to Bescot last night to await forwarding to Eastleigh.

47791 on the move...

Collected and removed from Eastleigh Yard by road 47791 (MBDL) is on its way north overnight to Barrow Hill. 47791 is set to feature as a runner at the forthcoming Barrow Hill gala weekend.



47739 and (insert) 73141 undergoing overhaul at Eastleigh Works 04/06/08
Photo: C Watson

KWVR Convoys...

37087 (XHHP) has completed its transfer to the Keighley & Worth Valley Railway from York behind 57012. D1023 from the NRM and 20087 collected from the East Lancashire Railway en route were also included in the convoy. 37423 has, with an overnight stop over at Crewe, brought 20110 25901 31108 and 37037 up from the South Devon Railway.



47791 on the M1 near Daventry 05/06/08 en route to Barrow Hill
Photo: B Pizer



56311 and 56301 through Chelford 04/06/08
Photo: KP Ware

05/06/08

47791...

En route to Barrow Hill by road from Eastleigh 47791 (MBDL) was still en route late afternoon today being noted traversing Leicestershire via the M1.

More Bones for Spain...?

Eastleigh residents 58015 58021 58027 and 58050 have been reallocated to the WZFS Spanish hire fleet which would indicate that further work is in the offing in Spain. These four were all previously allocated to the WZFF fleet following their stint on hire in France a couple of years ago.

Two Choppers and a Tractor...

37682 (HNRS) was tripped from LaFarge, Hope to Barrow Hill this morning with 20901 and 20905.

73138 / 86424...

Discussions with regards to a possible swap being arranged between Network Rail's 86424 and the ACLG owned 73138 have been ongoing for a while now but to date nothing has been finalised.

47145...

As hinted at earlier 47145 (XHHP) is staying with DRS although it was initially included in, subsequently being withdrawn from, a deal between DRS and HNRC for 47703 and 47714.

06/06/08

47791...

Transfer complete, 47791 (MBDL) was unloaded at Barrow Hill this morning. Kingsbury bound 47550 awaiting removal from Immingham Railfreight Terminal should be next to move.

87s (almost) to go...

The slightly delayed transfer of 87006 87007 and 87026 (all SBXL) from Crewe LNWR towards Europe was to have taken place today but ended up being cancelled. It is hoped to get the movement of these three Bulgarian bound 87s underway in the coming week.

43068...

Released from Brush Traction following a power unit transplant 43068 (GCHP) has been despatched back to Heaton by road.



37087 and D1023 on Haworth shed 06/06/08

Photo: IF

07/06/08

47550...

Recovered from Immingham Railfreight Terminal today 47550 has been transported by road to Heanor at Langley Mill to await forwarding to Kingsbury at some point.

EWS 37s...

The transfer of 37406 37410 (both WNTS) and 37416 (WNXX) to Eastleigh has been completed with the trio being dragged down from Bescot this afternoon. Further developments are anticipated on the EWS Class 37 front following indications that 37419 (WNTS) at Old Oak Common and 37425 (WNTS) currently tucked away at Allerton *may* feature in future plans...

09/06/08

Disposal...

Spares donor 08946 has been broken up on site at Goodman's near Sutton Coldfield (Wishaw). 08946 was stored from Allerton and WSNW in February 2002, RIP.

HNRC Notes...

37682 (HNRS) recently moved to Barrow Hill from LaFarge and 37683 (HNRS) currently at Long Marston awaiting transfer to Barrow Hill are to be returned to working order / mainline standards for an as yet unspecified mainline operator. Also due to move up to Barrow Hill from Long Marston is 20016 (HNRS) which is also to be returned to running order. 20056 / 81 (HNRL) is to return to Barrow Hill from Scunthorpe leaving 20066 / 82 in use on hire to Corus.



31556 awaiting collection from Bury 08/06/08

47550 at Heanor, Langley Mill 08/06/08
Photo: F Kutta



47804 37407 57601 37424 and 47851 pass through Preston 10/06/08
Photo: W Hunt

10/06/08

DRS Notes...

57004 (XHHP) was tripped across from Crewe Gresty Bridge to Crewe LNWR yesterday whilst 37087 (XHHP) has left the Keighley & Worth Valley Railway today behind 57009. 20310 and 20313 have returned 20110 25901 and 37037 to the West Country where they are to guest at the West Somerset Railway before being returned to the South Devon Railway.

Scottish 4s coming south...

WCRC despatched 47804 47851 and 57601 to Scotland to collect 37407 (WNSO) from Mossend and 37424 (WNSO) from Motherwell. They were brought south to Crewe for forwarding to the Churnet Valley Railway by road. The convoy, running as 0Z57, left Motherwell shortly after 15:00.

11/06/08

37407 / 37424...

Deposited at Crewe EMD last night following transfer south from Mossend and Motherwell 37407 and 37424 (both WNSO) are to complete their transfer from Crewe to the Churnet Valley Railway by road shortly. The movement of 37407 from Mossend yesterday is the first time it has moved by rail since January 2003 when it was hauled up from Crewe to Wigan CRDC with 47768. When it left the CRDC in October 2005 37407 gravitated north by road. Although originally destined to go to Motherwell 37407 never got any further than Mossend Yard where it has lain until being sold by EWS. Stationary for eight years 37424 is another rusty example having being sidelined at Motherwell since storage back in March 2000.

EWS Changes...

08770 sidelined at Margam has been stored WNTS whilst 90034 recently stopped at Crewe has been stored WNTR at the EMD. 90029, out of circulation since autumn 2005, has been reinstated to the WEFE pool from store at Crewe EMD. There's also been a few changes on the EWS website with the DB Schenker logo appearing alongside EWS. Not quite 60040 but that's another story...

Freightliner 47s for sale...

Freightliner are offering 47150 47289 and 47841 along with some wagons for sale. Further details can be seen on the Freightliner website.

MTU...

43105 (IECP) ran to Loughborough this morning entering the MTU re-engineering program at Brush Traction. 43307 (IECP) was released on the 9th.

12/06/08**One and a bit Class 37s on the road...**

37424 (WNSO) has been transported by road from Crewe EMD to the Churnet Valley Railway whilst the remains of 37359, nothing more than its frame and bogies, has been removed from Carnforth across to Thomson's, Stockton for processing.

37229...

Now sporting full DRS vinyls 37229 (XHSS) has re-entered traffic.

13/06/08**87s in the move...**

'Eurovans' 87007 87008 and 87026 (all SBXL) have been moved up from Crewe LNWR to Warrington this morning to await forwarding south to the Channel Tunnel and export to Europe while 87002 (ACXX) has been tripped up from Long Marston to Crewe LNWR.

14/06/08**37407...**

Collected from Crewe EMD yesterday 37407 (WNSO) has been transported by road to the Churnet Valley Railway.



37424 leaving Crewe on a low loader 12/06/08
Photo: IF

37422...

Repairs complete at Eastleigh the EWS Class 37 fleet has been bolstered with the return to service of 37422 (WFMU).



60040 approaching York 13/06/08
Photo: M Peanuts

60040...

Not to be confused with the DB livery, albeit fairly similar, 60040 (WFMU) ran from Toton to York yesterday for a naming ceremony to commemorate the 100th year of the Territorial Army. Painted in all over EWS maroon with large cab side numbers in white, a large 'Army, be the best' logo and DB Schenker branding 60040 has been named 'The Territorial Army Centenary'.

HNRC Barrow Hill...

Several developments of note at Barrow Hill. Network Rail's 37217 / 97304 (QETS) has been restarted and testing is underway whilst the Barclay 0-6-0 numbered 5 in LaFarge colours has been engaged in radio remote control tests on site. Tests have seen the Barclay shunter, which is to be shipped out to LaFarge shortly, working up to a quarter of a mile remotely controlled. 20092 (HNRS) has been taken in for overhaul and as this one is set to join

20168 at Hope 20092 will be fitted with remote control equipment. Lastly 47791 (MBDL), recently arrived from Eastleigh, is almost ready to be started up as most missing parts have now been sourced.

15/06/08

08447...

Following repairs at Long Marston 08447 was despatched north by road on the 13th, presumably back to Scotland for use at Deanside Transit.

Llangollen Diesels...

It has been advised that 20142 25313 37240 46010 and 47449, from the Llangollen Diesel fleet, are being put up for sale to any genuine interested parties with a deadline for registering an interest set for July 31st. Contact should be made via the Llangollen Diesel Group website.

97301 97303...

With regards to the proposed use of 97301 and 97303 on a Riviera / Pathfinder tour, the Settle & Carlisle Explorer, which is traversing the S&C on July 5th HNRC have advised that the two Network Rail machines will unfortunately not be available for this tour.

16/06/08

Heavyweight back on the mainline...

37712 has been reinstated to the MBDL pool and returned to the mainline with an early evening test run from Carnforth to Hellfield and back with 47787 and 47851 in tow.

37712 at Wennington 16/06/08

Photo: A Stoddon



Eurovans...

87007 87008 and 87026 (all MBDL) have been hauled from Warrington to Wembley Yard for forwarding through to Europe en route to Bulgaria.

47550...

On the move again today 47550 has been transported by road from Heanor, Langley Mill to Goodman's near Sutton Coldfield. The finalisation of its journey to nearby Kingsbury is anticipated to take place in a few days time.

47550 at Goodman's, Sutton Coldfield 16/06/08

Photo: B Pizer



92 to Brush...

92044 (WNWX), a second Class 92 to Brush Traction, Loughborough, is to be moved by road from store at Crewe EMD shortly.

43 from Brush...

43080 (GCHP) has been released from Brush Traction and has been returned to Heaton by road.

17/06/08

Dollands Moor 87s...

87007 87008 and 87026 (all SBXL) had reached Dollands Moor by mid afternoon and were awaiting transfer through the tunnel across to Europe.

92 to Brush...

92044 (WNWX) has, it transpires, already been transported from Crewe EMD to Brush Traction, Loughborough. Movement, by road, took place yesterday.



18/06/08

87008 in Wembley Yard 16/06/08

Photo: J Glover

One gone...

87007 (SBXL) has been tripped across to France. 87008 and 87026 (both SBXL) were still at Dollands Moor this afternoon awaiting transfer.

19/06/08

Second away...

87008 (SBXL) has been tripped through to France for forwarding through to Bulgaria. 87026 (SBXL) remains at Dollands Moor.

Anglia 86 on the road...

Noted late morning on the M40 near Warwick was 86232 (SAXL) en route to Long Marston from Brush Traction by road from Loughborough. Although initially sent to Brush Traction for possible use by DRS plans came to nothing and 86218 and 86232 have languished at Loughborough since awaiting removal to Long Marston.

Today's movement of 86232 is the second transfer as 86218 (SAXL) was delivered to Long Marston yesterday. With 86218 and 86232 now at Long Marston this means that all the stored 86/2s, bar 86212 at East Ham and 86233 languishing on the scrap line at Crewe EMD, are now located at Long Marston.



73141 on test at Eastleigh Works 20/06/08

Photo: C Watson

EWS shunter fleet changes...

Repaired and released from Margam 08951 has been reinstated back to the WSSI pool and is on the move by road being noted around lunch time being collected from the loading point at Port Talbot. Also reinstated is 08428 at Doncaster Carr which is returned to the WSSN pool. Both were stored earlier this month. 08500 08540 08577 08597 09008 09010 09015 and 09020 have all been reallocated from WNTR to WNTS.

Electric mails...

The return to electric traction for the WCML GBRf mail thunderbirds, a duty last covered by 87022 and 87028 but more recently facilitated by Riviera Class 47s, looks imminent with the anticipated deployment of 86101 (ACAC) to these duties. 87002 (ACXX), once re-certified and passed for a return to the mainline, is set to join it in due course.

20/06/08

Purple Peril...

At Wansford 56003, undergoing conversion to 56312 and now physically numbered as such, has been painted into a rather unique but effective purple and yellow colour scheme.



56003 / 56312 at Wansford 20/06/08
Photo: N Boden

08770...

With the boat some Fastline and Freightliner Class 66s on board due any day now 08770 (WNTS) has been relocated from Margam to Newport Docks for shunting duties as required.

87026...

Third to go, of the current batch, 87026 (SBXL) was tripped through the tunnel last night to join 87007 and 87008 in France. On arrival at Frethun Yard there is a need to lift each Class 87 as it passes through to measure the wheels before being granted permission to proceed across Europe. This is because the Class 87s have narrow wheels when compared to modern UIC standards.

FLHH 47s...

47811 and 47830 (both DFLH) normally found in the Crewe Basford Hall area have been noted across at Crewe LNWR.

21/06/08

37425...

Allerton resident 37425 (WNTS) has been cleared for movement and transfer, possibly to Eastleigh, should follow.

New Freds and Fleds(?)...

The boat with six new Class 66s on board has entered UK waters and is to dock at Newport shortly. On board are 66301 66302 and 66303 for Fastline along with 66598 66599 and 66953 for Freightliner.

22/06/08

37682...

Recently delivered to Barrow Hill from store at LaFarge, Hope 37682 (HNRS) has been restarted and has been seeing use as the depot shunter.

37682 at Barrow Hill 22/06/08
Photo: M Hopper



47295...

MoD Ashchurch resident 47295 has been purchased by HNRC which, pending future developments, is initially to be removed from Ashchurch to Long Marston.

Fastline 66s...

It has been advised that the three Fastline Class 66s on the boat that has docked at Newport are 66301 66304 and 66305 not 66301 66302 and 66303 as reported yesterday.

Skip 22...

67022 has been reinstated to WAAN from store at Toton.

23/06/08

French 92s...

Previously unrecorded was the return to the UK of 92010 (WNWX) from France late March. Along with 92038 (WZGF)

92010 was noted being dragged south through Rugby behind 92015 then later in Wembley Yard on the 18th. Also back in the UK recently is 92043 (WZGF) which was noted at Crewe EMD on the 12th.

New 66s...

66301 66304 66305 66598 66599 and 66953 (the latter three already registered to MBDL) have been off loaded at Newport Docks.

24/06/08

Alstom Gronks...

08617 and 08934 have been reinstated to the ATLO operational pool from ATXX.

New Sheds...

66414 has taken 66301 66304 and 66305 (all now MBDL) from Newport Docks to Crewe for commissioning. 66302 and 66303 have also registered MBDL whilst Freightliner's 66598 66599 and 66953, which have entered service, have been reallocated to the DFHG pool from MBDL.

On the road...

47701 (MBDL) has left Long Marston by road for transfer to the Gloucestershire-Warwickshire Railway whilst 50026 has been transported from Derby to Old Oak Common. The recovery of 47295 from MoD Ashchurch to Long Marston is expected to take place shortly as is the transfer of 37894 (WNSO) from Tyne Yard to Kingsbury.

Electric mail...

86101 (ACAC) has gravitated to Warrington from Crewe LNWR in readiness for the GBRf mail thunderbird duties. 87002 currently at LNWR has been reallocated to the ACAC pool from ACXX and mainline testing is, at the moment, looking likely for mid to late July.

25/06/08

37894...

Transport has been noted at Tyne Yard for the removal by road of 37894 (WNSO) to Kingsbury.

26/06/08

37894...

On the move by road to Kingsbury 37894 (WNSO) has been brought south from Tyne Yard as far as Woodall Services on the M1.

47772...

WCRC acquisition 47772 (WNSO) has been hauled north from Margam to Carnforth. 47245 was provided.

More DRS Class 57s...

Barry WRD residents 57002 and 57003 have been added to the DRS fleet subsequently transferring from the SBXL storage pool to the XHHP DRS holding pool. This development leaves only Crewe LNWR resident 57001 available for Cotswold Rail / Advenza if they are to add to their current pair of Class 57s.

47245 with 47772 at Gaer Junction, Newport 26/06/08
Photo: T Dumelow





En route Tyne Yard to Kingsbury 37894 at Woodall Services on the M1 near Chesterfield 26/06/08
Photo: IF

MTU...

43077 and 43111 (both IECF) have arrived at Brush Traction for re-engineering swapping places with 43239 and 43299 (both IECF) which have been released following conversion.

Assignments to move...

37425 (WNTS) at Allerton has been assigned for movement to Eastleigh whilst 60064 60070 and 60098 (all WNTS) are now assigned for movement from Immingham to Toton. One to go by rail, three by road.

27/06/08

37894...

Following its overnight stop over at Woodall 37894 (WNSO) has completed its road transfer from Tyne Yard to Kingsbury.

HNRC 37s...

37201 at Barrow Hill has been acquired from private ownership. It is a repurchase having earlier being sold into preservation by HNRC and it may in turn become a candidate for use by the 'yellow team'. With regards to a couple of other 'refurbs' currently on the HNRC books, blue paint should be required for 37682 (HNRS), a recent arrival at Barrow Hill, and 37683 currently residing at Long Marston.

50040...

Although its impending demise was first mooted about this time last year the stripped and derelict shell of 50040 has today been moved from the Coventry Railway Centre to the Sims Metals establishment at Halesowen for disposal.

60098...

The movement by road of the three stored Class 60s from Immingham has begun with the transfer to Toton of 60098 (WNTS).



50040 in the yard at Sims Metals, Halesowen 28/06/08
Photo: B Pizer

28/06/08

47830...

Back to super shunter duties 47830 (DFLH) latterly noted on LNWR has been returned to Crewe Basford Hall.

29/06/08

A few loose ends...

60060 (WNTS) has been moved from Toton to Crewe EMD for attention. It was transferred to Bescot in the first part of last week before being forwarded to Crewe on the 24th. 92010 (WNWX) has been returned to France, it went through the tunnel on the 25th, whilst Cotswold Rail's 33202 (CRRH) has spent the weekend as an exhibit at the Tyseley 100 gala event.

Fastline 66s...

Released into traffic from Crewe 66301 has hauled 66304 and 66305 to Doncaster today.

30/06/08

37425...

66011 has hauled Eastleigh bound 37425 (WNTS) from Allerton to Warrington from where it can be forwarded to Eastleigh.



50040...

The demolition of 50040 is well underway with little more than a frame and one cab remaining this afternoon.

60064...

The second of the three stored Class 60s being transported from Immingham to Toton by road is on its way with 60064 (WNTS) being noted on the M1 late afternoon en route.

37425 leaving Edge Hill behind 66011

30/06/08 Photo: T Hall-Smith

56003 / 56312 on test at Wansford 30/06/08

Photo: Hanson Traction Ltd



Part scrapped 50040 at Sims Metals, Halesowen 30/06/08
Photo: P Spraklen



Stock Changes

038 0806 17/22

Class 08			TO WCBN-WCBI	66002	TO WBAI-WBAN
		60009	TO WFMU-WCBK	66003	TO WBAK-WFMU
08428	TO WSSN-WNTS	60012	TO WCBK-WCBN		TO WFMU-WBAN
	TO WNTS-WSSN		TO WCBN-WCBI	66004	TO WBAM-WBAN
08500	TO WNTR-WNTS	60014	TO WFMU-WCAK		TO WBAN-WBAK
08540	WQ WNTR-WNTS		TO WCAK-WCAI	66005	TO WBAM-WBAN
08577	WQ WNTR-WNTS	60017	TO WCBN-WCBK	66006	TO WBAN-WBAK
08597	WQ WNTR-WNTS	60018	TO WCAM-WCAN	66007	TO WBAI-WFMU
08617	AT ATXX-ATLO	60021	TO WCBK-WFMU		TO WFMU-WBAN
08664	TO WSSN-WNTS		TO WFMU-WCBI		TO WBAN-WBAI
08770	TO WSSI-WNTS	60023	TO WCBK-WCBN		TO WBAI-WBAN
08798	TO WSSN-WNTS		TO WCBN-WCBI	66008	TO WBAI-WBAN
08888	WQ WNTS-WSSN	60024	TO WCAI-WFMU		TO WBAN-WBAK
08934	AT ATXX-ATLO	60025	TO WCBK-WFMU		TO WBAK-WBAN
08951	TO WSSI-WNTS		TO WFMU-WCBI	66009	TO WBAN-WFMU
	TO WNTS-WSSI	60026	TO WCBN-WCBI		TO WFMU-WBAN
		60029	TO WCAK-WFMU		TO WBAN-WBAN
Class 09			TO WFMU-WCAK	66012	TO WBAK-WBAN
			TO WCAK-WFMU	66013	TO WBAM-WBAN
09006	TO WSSN-WNTS	60034	TO WCAI-WFMU	66014	TO WBAM-WBAI
09008	WQ WNTR-WNTS	60040	TO WFMU-WCAI		TO WBAI-WFMU
09010	WQ WNTR-WNTS		TO WCAI-WCAK		TO WFMU-WBAN
09015	WQ WNTR-WNTS	60042	TO WCAI-WCAN	66015	TO WBAI-WFMU
09020	WQ WNTR-WNTS	60043	TO WCAI-WCAN		TO WFMU-WBAN
09107	TO WSSN-WNTS		TO WCAN-WCAI	66016	TO WBAN-WBAI
			TO WCAI-WCAN		TO WBAI-WBAN
Class 37		60044	TO WCAN-WCAI		TO WBAM-WBAN
		60047	TO WCAI-WFMU	66017	TO WBAM-WBAN
37407	De-registered TO WNSO	60049	TO WCAI-WFMU		TO WBAN-WFMU
37417	TO WKBN-WFMU	60051	TO WCBK-WCBN		TO WFMU-WBAN
37422	TO WFMU-WKBN		TO WCBN-WCBK		TO WBAN-WBAI
	TO WKBN-WFMU		TO WCBK-WCBN	66018	TO WBAM-WBAI
	TO WFMU-WKBN		TO WCBN-WCBI		TO WBAI-WFMU
37424	De-registered TO WNSO	60056	TO WCBK-WFMU		TO WFMU-WBAN
37712	Re-registered HQ MBDL	60059	TO WCBK-WFMU		TO WBAN-WBAK
37894	De-registered TO WNSO		TO WFMU-WCBK		TO WBAK-WFMU
37901	Re-registered HQ MBDL		TO WCBK-WFMU		TO WFMU-WBAK
			TO WFMU-WCBK	66019	TO WBAI-WBAN
Class 43		60063	TO WCAN-WCAK		TO WBAN-WBAN
		60068	TO WCAK-WFMU		TO WBAM-WBAN
43105	EC IECF RN 43305		TO WFMU-WCAI	66023	TO WBAK-WBAI
		60074	TO WCAI-WFMU		TO WBAI-WBAN
Class 47			TO WFMU-WCAI		TO WBAM-WBAN
		60075	TO WCAK-WFMU		TO WBAN-WBAI
47488	De-registered HQ SRLS		TO WFMU-WCAN		TO WBAI-WBAN
			TO WCAN-WCAK	66024	TO WBAM-WBAI
Class 57		60076	TO WCAI-WCAN		TO WBAI-WBAN
			TO WCAN-WCAI		TO WBAM-WBAN
57002	HQ-KM SBXL-XHHP	60077	TO WCBK-WCBN		TO WBAN-WBAN
57003	HQ-KM SBXL-XHHP		TO WCBN-WCBI	66025	TO WBAI-WFMU
		60079	TO WCAN-WCAI		TO WFMU-WBAI
Class 58		60082	TO WCAI-WFMU		TO WBAI-WBAN
			TO WFMU-WCAN		TO WBAN-WBAK
58015	TO WZFF-WZFS		TO WCAN-WFMU		TO WBAK-WBAN
58021	TO WZFF-WZFS	60083	TO WCAK-WCAI		TO WBAN-WBAK
58027	TO WZFF-WZFS	60084	TO WCAI-WCAN	66027	TO WBAM-WBAI
58050	TO WZFF-WZFS		TO WCAN-WCAI		TO WBAI-WBAN
		60085	TO WFMU-WCAN		TO WBAM-WBAN
Class 59		60089	TO WCBN-WCBI		TO WBAN-WFMU
			TO WCBK-WFMU	66030	TO WBAM-WBAI
59201	TO WDAK-WFMU	60091	TO WFMU-WCBK	66034	TO WBAM-WBAN
	TO WFMU-WDAK		TO WCBK-WCBN		TO WBAN-WBAK
59202	TO WDAK-WFMU		TO WCBN-WCBI	66035	TO WBAK-WFMU
	TO WFMU-WDAK	60093	TO WCAI-WCAK		TO WFMU-WBAN
			TO WCAK-WCAI		TO WBAN-WBAK
Class 60		60094	TO WFMU-WCAN	66037	TO WBAN-WBAN
			TO WCAN-WCAI		TO WBAM-WBAK
60005	TO WCBK-WFMU			66040	TO WBAN-WBAI
	TO WFMU-WCBN	Class 66			TO WBAI-WBAN
	TO WCBN-WFMU			66041	TO WBAN-WBAN
	TO WFMU-WCBI	66001	TO WBAN-WBAI		TO WBAN-WFMU
60007	TO WCBK-WCBN		TO WBAI-WBAN		TO WFMU-WBAN

Stock Changes

038 0806 18/22

66043	TO WBAN-WBAK		TO WFMU-WBAM		TO WBAN-WBAM
	TO WBAI-WBAI		TO WBAM-WBAI	66136	TO WBAI-WBAN
	TO WBAI-WBAN		TO WBAI-WBAN	66136	TO WBAN-WBAN
	TO WBAN-WBAI	66091	TO WBAN-WBAI	66138	TO WBAM-WBAN
	TO WBAI-WBAK		TO WBAI-WBAN		TO WBAN-WBAI
	TO WBAK-WBAM	66093	TO WBAN-WBAK	66139	TO WBAN-WBAI
66044	TO WBAK-WFMU		TO WBAK-WBAN		TO WBAI-WBAM
66047	TO WBAN-WBAI		TO WBAN-WFMU		TO WBAM-WFMU
	TO WBAI-WBAN		TO WFMU-WBAN		TO WFMU-WBAN
66048	TO WBAI-WBAN	66094	TO WBAN-WBAK		TO WBAN-WBAI
	TO WBAN-WBAI	66096	TO WBAN-WFMU	66140	TO WBAM-WBAK
	TO WBAI-WBAN		TO WFMU-WBAM		TO WBAK-WBAN
	TO WBAN-WBAI		TO WBAM-WBAN		TO WBAN-WBAK
66051	TO WBAI-WBAN		TO WBAN-WBAN	66142	TO WBAK-WBAM
66053	TO WBAN-WBAI	66097	TO WBAN-WBAM	66144	TO WBAI-WBAN
	TO WBAI-WFMU		TO WBAM-WBAI		TO WBAN-WBAM
	TO WFMU-WBAI		TO WBAI-WBAN	66145	TO WBAN-WFMU
66054	TO WBAI-WBAN	66098	TO WBAK-WBAI	66146	TO WBAK-WFMU
	TO WBAN-WBAI		TO WBAI-WBAM		TO WFMU-WBAN
	TO WBAI-WBAN		TO WBAM-WFMU		TO WBAN-WBAK
66056	TO WBAM-WBLI		TO WFMU-WBAM		TO WBAK-WBAN
	TO WBLI-WBLN	66099	TO WBAI-WBAN	66147	TO WBAI-WBAM
	TO WBLN-WBAM		TO WBAN-WBBN		TO WBAM-WBAN
	TO WBAM-WFMU	66101	TO WBAN-WBAM	66148	TO WBAM-WBAN
66057	TO WFMU-WBLI	66102	TO WBBN-WBAM	66149	TO WBAM-WFMU
66059	TO WBLI-WBAN		TO WBAM-WBBN		TO WFMU-WBAN
	TO WBAN-WBLI	66104	TO WFMU-WBBN	66151	TO WBAI-WBAM
66060	TO WBAI-WBAN		TO WBBN-WBAI	66152	TO WBAK-WBAN
66061	TO WBAM-WBAN		TO WBAI-WFMU		TO WBAN-WBAI
	TO WBAN-WBAI		TO WFMU-WBBN		TO WBAI-WBAN
66063	TO WBAK-WFMU	66105	TO WBBN-WBAI	66153	TO WBAN-WFMU
	TO WFMU-WBAK		TO WBAI-WBAM		TO WFMU-WBAN
	TO WBAK-WFMU	66106	TO WBBN-WBBI	66154	TO WBAN-WBAI
66065	TO WBAM-WBAN		TO WBBI-WBBN	66155	TO WBAN-WBAM
66066	TO WBAI-WBAM	66108	TO WBAM-WFMU	66157	TO WBAI-WBAM
66067	TO WBAI-WBAN		TO WFMU-WBBN		TO WBAM-WBAN
66068	TO WBAN-WFMU	66109	TO WBAM-WBAK		TO WBAN-WBAI
66069	TO WBAM-WBAN		TO WBAK-WBAI	66158	TO WBAM-WFMU
66070	TO WBAN-WBAI		TO WBAI-WBAN		TO WFMU-WBAK
	TO WBAI-WBAN	66110	TO WBAN-WBAI		TO WBAK-WBAN
	TO WBAN-WFMU		TO WBAI-WBBN		TO WBAN-WFMU
66074	TO WBAM-WFMU	66113	TO WBBN-WFMU	66159	TO WBAI-WBAN
	TO WFMU-WBAK	66115	TO WBAI-WFMU	66160	TO WBAM-WBAN
66075	TO WBAN-WBAM		TO WFMU-WBAN	66161	TO WBAI-WBAN
66076	TO WBAM-WBAI	66116	TO WBAN-WBAI		TO WBAN-WBAI
	TO WBAI-WBAM		TO WBAI-WBAN	66162	TO WBAN-WBAI
66077	TO WBAN-WBAM		TO WBAN-WBAI		TO WBAI-WBAN
	TO WBAM-WBAI	66117	TO WBAN-WFMU	66163	TO WBAI-WBAM
	TO WBAI-WBAK	66118	TO WBAM-WBAN	66164	TO WBAI-WBAM
	TO WBAK-WFMU		TO WBAN-WFMU		TO WBAM-WBAI
	TO WFMU-WBAN	66119	TO WFMU-WBAK		TO WBAI-WBAM
	TO WBAN-WBAM		TO WBAK-WBAN	66165	TO WBAK-WBAN
66079	TO WBAN-WFMU		TO WBAN-WBAK		TO WBAN-WBAI
	TO WFMU-WBAN	66120	TO WBAM-WBAK		TO WBAI-WBAN
	TO WBAN-WBAI	66121	TO WBAN-WBAI		TO WBAN-WBAN
66081	TO WBAN-WBAI		TO WBAI-WBAN	66166	TO WBAN-WFMU
	TO WBAI-WBAN	66122	TO WBAN-WBAI		TO WFMU-WBAM
	TO WBAN-WBAM		TO WBAI-WBAN	66167	TO WFMU-WBAN
66082	TO WBAM-WBAN	66124	TO WFMU-WBAM		TO WBAN-WBAI
	TO WBAN-WBAM	66125	TO WFMU-WBAM		TO WBAI-WFMU
66083	TO WBAN-WFMU		TO WBAM-WBAN	66168	TO WBAI-WBAN
	TO WFMU-WBAN	66126	TO WBAK-WBAN	66169	TO WBAI-WBAN
	TO WBAN-WBAK	66127	TO WBAM-WBAN		TO WBAN-WBAK
	TO WBAK-WBAN	66128	TO WBAM-WBAK	66170	TO WBAM-WBAN
66085	TO WBAN-WFMU	66129	TO WFMU-WBAM	66171	TO WBAN-WBAI
	TO WFMU-WBAI	66130	TO WBAM-WFMU	66172	TO WBAI-WBAN
	TO WBAI-WBAN	66132	TO WBAI-WBAM		TO WBAN-WFMU
66086	TO WBAI-WBAN	66133	TO WBAK-WBAN	66173	TO WBAI-WBAN
66087	TO WBAN-WFMU		TO WBAN-WBAI	66174	TO WBAK-WBAN
	TO WFMU-WBAM	66134	TO WBAN-WBAN	66176	TO WBAM-WBAN
66088	TO WBAN-WBAM		TO WBAN-WBAI		TO WBAN-WBAM
66089	TO WBAN-WFMU		TO WBAI-WBAN	66177	TO WBAN-WBAK

Stock Changes

038 0806 19/22

66178	TO WBAN-WBAM	66303	Registered HQ MBDL
	TO WBAM-WBAN	66304	New / Registered HQ MBDL
	TO WBAN-WBAM	66305	New / Registered HQ MBDL
66180	TO WBAK-WBAN	66598	New HQ MBDL
	TO WBAN-WBAI		HQ MBDL-DFHG
	TO WBAI-WBAN	66599	New HQ MBDL
	TO WBAN-WBAM		HQ MBDL-DFHG
66181	TO WBAN-WBAI	66953	New HQ MBDL
	TO WBAI-WBAM		HQ MBDL-DFHG
	TO WBAM-WBAN		
	TO WBAN-WBAK	Class 67	
66183	TO WBAN-WBAK		
	TO WBAK-WBAN	67003	TO WAAN-WFMU
66184	TO WBAM-WBAN	67012	TO WAWN-WFMU
	TO WBAN-WBAI	67013	TO WFMU-WAWN
	TO WBAI-WBAK	67014	TO WAWN-WFMU
66185	TO WBAN-WBAI		TO WFMU-WAWN
	TO WBAI-WBAM	67017	TO WAAN-WFMU
66186	TO WBAN-WBAI		TO WFMU-WAAN
	TO WBAI-WBAN		TO WAAN-WFMU
66187	TO WBAN-WBAM		TO WFMU-WAAN
	TO WBAM-WBAI	67020	TO WAAN-WFMU
	TO WBAI-WBAN		TO WFMU-WAAN
	TO WBAN-WBAI	67022	TO WNTS-WFMU
66188	TO WBAM-WBAN		TO WFMU-WAAN
66189	TO WBAN-WBAI	67026	TO WFMU-WAAN
	TO WBAI-WBAN	67028	TO WAAN-WFMU
	TO WBAN-WBAI		TO WFMU-WAAN
66192	TO WBAN-WBAM		TO WAAN-WFMU
	TO WBAM-WBAK		
66193	TO WBAK-WBAN	Class 86	
	TO WBAN-WBAM		
	TO WBAM-WBAI	86233	OY-CE SRLO
	TO WBAI-WBAK		
66194	TO WBAN-WBAM	Class 87	
66196	TO WBAM-WBAI		
	TO WBAI-WBAM	87002	HQ-WB SBXL-ACXX
66197	TO WBAK-WBAN		WB ACXX-ACAC
	TO WBAN-WBAK		
	TO WBAK-WFMU	Class 90	
	TO WFMU-WBAM		
66198	TO WBAM-WBAK	90028	CE WFEF-WFMU
66200	TO WBAN-WBAK		CE WFMU-WEFE
66201	TO WBAK-WBAN	90029	CE WNTR-WFMU
	TO WBAN-WBAN		CE WFMU-WEFE
66204	TO WBAI-WBAN	90034	CE WFEF-WFMU
	TO WBAN-WBAI		CE WFMU-WNTR
	TO WBAI-WBAN		
66206	TO WFMU-WBAM	Class 92	
	TO WBAM-WBAN		
66207	TO WBAN-WBAK	92001	CE WFMU-WTAE
66213	TO WBAN-WFMU	92004	CE WTAE-WFMU
66221	TO WBAK-WBAN		CE WFMU-WTAE
66227	TO WBAN-WBAM	92007	CE WTAE-WFMU
66230	TO WBAK-WFMU		CE WFMU-WTAE
	TO WFMU-WBAN	92009	CE WTAE-WFMU
	TO WBAN-WBAM		CE WFMU-WTAE
	TO WBAM-WBAI	92013	CE WTAE-WFMU
	TO WBAI-WBAN	92015	CE WTAE-WFMU
66237	TO WBAK-WFMU		CE WFMU-WTAE
	TO WFMU-WBAK	92017	CE WFMU-WTAE
	TO WBAK-WBAI	92022	CE WTAE-WFMU
66238	TO WFMU-WBAI		CE WFMU-WTAE
	TO WBAI-WBAN	92026	CE WTAE-WFMU
66248	TO WBAI-WBAM		CE WFMU-WTAE
66250	TO WBAN-WBAK	92037	CE WTAE-WFMU
	TO WBAK-WBAN		CE WFMU-WTAE
	TO WBAN-WBAK	92039	CE WTAE-WFMU
	TO WBAK-WBAN		CE WFMU-WTAE
	TO WBAN-WBAI	92042	CE WTAE-WFMU
66301	New / Registered HQ MBDL		
66302	Registered HQ MBDL		

Class 08

08077 Southampton Maritime
 08345 Long Marston
 08389 Active / Warrington
 08397 Allerton
 08401 Immingham
 08402 Motherwell
 08411 Colne Valley Railway
 08418 Bescot Yard
 08441 Colne Valley Railway
 08442 Eastleigh
 08451 Longsight
 08460 Colne Valley Railway
 08480 Toton
 08485 Active / Carlisle Yard
 08489 Millerhill
 08493 CF Booth Rotherham
 08500 Doncaster Carr
 08503 Heanor Langley Mill
 08509 Immingham C&W Yard
 08510 Eastleigh
 08511 Barry Island Railway
 08512 Doncaster Carr
 08516 Bristol Barton Hill
 08517 Long Marston
 08528 Bescot Yard
 08529 CF Booth Rotherham
 08535 RMS Locotec Wakefield
 08536 Derby Etches Park
 08540 Toton Compound
 08543 Bescot Yard
 08561 Doncaster Carr
 08569 Doncaster Carr
 08577 Bescot Yard
 08580 Bescot Yard
 08582 Doncaster Carr
 08587 Margam
 08593 Toton Compound
 08597 Thornaby
 08651 Bescot Yard
 08664 Doncaster Carr
 08665 Healey Mills
 08668 Long Marston
 08670 Motherwell
 08683 Goodman's Sutton Coldfield
 08689 Toton Compound
 08694 Old Oak Common
 08695 Barrow Hill
 08697 Derby Etches Park
 08698 Thornaby
 08699 Allely's Studley
 08709 Bescot
 08715 Carlisle Currock
 08728 Long Marston
 08736 Long Marston
 08745 Southampton Maritime
 08765 Eastleigh
 08770 Newport Docks
 08775 Bescot
 08783 Toton
 08798 Doncaster Carr
 08807 AV Dawson Middlesbrough
 08809 Allely's Studley
 08813 Long Marston
 08819 CF Booth Rotherham
 08824 Crewe EMD
 08825 Battlefield Line
 08827 Long Marston
 08828 Bescot Yard
 08842 Bescot
 08854 Margam
 08856 Didcot
 08866 Doncaster Carr
 08869 Long Marston
 08872 Immingham
 08877 Wigan CRDC

08884 Bescot Yard
 08887 Longsight
 08890 Eastleigh
 08896 Goodman's Sutton Coldfield
 08900 Margam
 08905 Bescot Yard
 08909 Doncaster Carr
 08912 AV Dawson Middlesbrough
 08918 Old Oak Common
 08919 Old Oak Common
 08920 Bescot Yard
 08924 Motherwell
 08925 Doncaster Carr
 08928 Long Marston
 08933 Hoo Junction
 08941 Doncaster Carr
 08953 Doncaster Carr
 08954 Allerton
 08955 Bescot Yard

Class 09

09003 Margam
 09006 Doncaster Carr
 09007 Doncaster Carr
 09008 Bescot Yard
 09009 Stewarts Lane
 09010 Hither Green
 09011 Margam
 09012 Hither Green
 09013 Toton Compound
 09015 Margam
 09016 St Blazey
 09018 Hither Green
 09020 Margam
 09021 Immingham
 09024 Eastleigh
 09102 Margam
 09103 Ayr
 09104 Thornaby
 09107 Doncaster Carr
 09202 Doncaster Carr
 09203 Crewe EMD
 09204 Tyne Yard
 09205 Thornaby

Class 20

20016 Long Marston
 20032 Long Marston
 20057 Long Marston
 20072 Long Marston
 20081 Long Marston
 20088 Long Marston
 20092 Barrow Hill
 20105 Barrow Hill
 20119 Barrow Hill
 20121 Barrow Hill
 20132 Barrow Hill
 20138 Long Marston
 20145 Kingsbury
 20166 Bodmin & Wenford Railway
 20197 Bodmin & Wenford Railway
 20215 Long Marston
 20311 Crewe Gresty Bridge
 20312 Active
 20314 Brush Traction Loughborough
 20315 Active
 20902 Long Marston
 20903 Long Marston
 20904 Barrow Hill
 20906 Crewe LNWR

Class 31

31107 Derby RTC
 31113 Kingsbury
 31166 Wensleydale Railway

31188 Wensleydale Railway
 31301 Long Marston
 31415 Meldon
 31422 Tyseley
 31423 Long Marston
 31437 Long Marston
 31439 Long Marston
 31461 Battlefield Line
 31465 Derby RTC
 31467 Kingsbury
 31468 Barrow Hill
 31556 East Lancashire Railway

Class 33

33019 Battlefield Line
 33021 Tyseley
 33029 Carnforth
 33030 Carnforth
 33202 Tyseley

Class 37

37023 Brush Traction Loughborough
 37029 Brush Traction Loughborough
 37042 Doncaster Carr
 37046 Tyne Yard
 37057 Barrow Hill
 37058 Tyne Yard
 37077 Bristol Barton Hill
 37079 Kingsbury
 37087 Carlisle Kingmoor
 37165 Carnforth
 37170 Barrow Hill
 37194 Carlisle Kingmoor
 37196 Tyne Yard
 37197 Carlisle Kingmoor
 37198 Great Central Railway
 37201 Barrow Hill
 37203 Bescot Yard
 37214 Carnforth
 37217 Barrow Hill
 37221 Tyne Yard
 37222 Carnforth
 37229 Active
 37238 Tyne Yard
 37261 Carlisle Kingmoor
 37293 Tyne Yard
 37294 Crewe DMD
 37372 Barrow Hill
 37377 Bristol Barton Hill
 37402 Toton
 37403 Margam
 37406 Eastleigh
 37410 Eastleigh
 37412 Margam
 37413 Margam
 37415 Margam
 37416 Eastleigh
 37418 Allely's Studley
 37419 Old Oak Common
 37421 Motherwell
 37425 Warrington
 37426 Crewe DMD
 37427 Motherwell
 37428 Margam
 37503 Doncaster Carr
 37510 Carlisle Kingmoor
 37515 Carlisle Kingmoor
 37516 Doncaster Carr
 37517 Carnforth
 37521 Doncaster Carr
 37601 Brush Traction Loughborough
 37603 Brush Traction Loughborough
 37604 Brush Traction Loughborough
 37667 Active
 37668 Carnforth
 37669 Margam

37670 Knottingley
 37671 Tyne Yard
 37672 Barrow Hill
 37675 Margam
 37676 Carnforth
 37677 CF Booth Rotherham
 37680 LaFarge Hope
 37682 Barrow Hill
 37683 Long Marston
 37684 Margam
 37685 Carnforth
 37688 Active
 37689 Doncaster Carr
 37692 Margam
 37693 Tyne Yard
 37696 Long Marston
 37698 Margam
 37704 TJ Thomson Stockton
 37706 Carnforth
 37707 Bescot Yard
 37709 Millerhill
 37710 Carnforth
 37717 Carnforth
 37796 Tyne Yard
 37798 Margam
 37886 Millerhill
 37890 Margam
 37891 Tyne Yard
 37893 Bescot Yard
 37894 Kingsbury
 37895 Bescot Yard
 37896 Margam
 37898 Long Marston

Class 43

43101 Brush Traction Loughborough
 43103 Brush Traction Loughborough
 43121 Brush Traction Loughborough
 43157 Brush Traction Loughborough

Class 47

47145 Carlisle Kingmoor
 47150 Crewe Basford Hall
 47194 Carnforth
 47236 Carnforth
 47289 Crewe Basford Hall
 47295 MoD Ashchurch
 47309 TJ Thomson Stockton
 47355 Carnforth
 47358 TJ Thomson Stockton
 47363 Carnforth
 47368 Carnforth
 47370 Ipswich
 47488 Barrow Hill
 47489 Carnforth
 47525 Carnforth
 47526 Carnforth
 47550 Goodman's Sutton Coldfield
 47575 Crewe Heritage Centre
 47640 Battlefield Line
 47703 Wensleydale Railway
 47707 Barrow Hill
 47709 Derby RTC
 47714 Brush Traction Loughborough
 47716 Meldon
 47737 Kingsbury
 47739 Eastleigh Works
 47744 Barrow Hill
 47747 Crewe LNWR
 47767 Allely's Studley
 47770 Tyseley
 47772 Carnforth
 47776 Carnforth
 47786 Carnforth
 47790 Brush Traction Loughborough
 47791 Barrow Hill

47799 Old Oak Common
 47810 Norwich Crown Point
 47811 Crewe LNWR
 47816 Crewe Basford Hall
 47829 Crewe Gresty Bridge
 47830 Crewe Basford Hall
 47841 Dagenham
 47972 Carnforth

Class 50

50040 Sims Metals Halesowen

Class 56

56003 Nene Valley Railway
 56006 Barrow Hill
 56007 Old Oak Common
 56009 Brush Traction Loughborough
 56011 Long Marston
 56018 Wembley Yard
 56021 Long Marston
 56022 Weardale Railway
 56025 Immingham C&W Yard
 56027 Immingham C&W Yard
 56031 Wembley Yard
 56032 Old Oak Common
 56033 Healey Mills
 56037 Old Oak Common
 56038 Wembley Yard
 56041 Healey Mills
 56043 Immingham C&W Yard
 56046 Toton Compound
 56048 Healey Mills
 56049 Old Oak Common
 56051 Old Oak Common
 56052 Immingham C&W Yard
 56053 Healey Mills
 56054 Ferrybridge
 56055 Healey Mills
 56056 Healey Mills
 56058 Old Oak Common
 56059 Old Oak Common
 56060 Old Oak Common
 56062 Margam
 56064 Immingham C&W Yard
 56065 Wembley Yard
 56067 Ferrybridge
 56068 Healey Mills
 56069 Wembley Yard
 56070 Old Oak Common
 56071 Old Oak Common
 56072 Healey Mills
 56073 Toton Compound
 56074 Old Oak Common
 56076 Immingham C&W Yard
 56077 Crewe DMD
 56078 Wembley Yard
 56079 Healey Mills
 56081 Old Oak Common
 56082 Immingham C&W Yard
 56083 Ferrybridge
 56084 Immingham C&W Yard
 56085 Thornaby
 56086 Immingham C&W Yard
 56087 Wembley Yard
 56088 Thornaby
 56089 Immingham C&W Yard
 56090 Old Oak Common
 56091 Wembley Yard
 56093 Healey Mills
 56094 Old Oak Common
 56095 Old Oak Common
 56096 Old Oak Common
 56099 Healey Mills
 56100 Margam
 56101 Immingham C&W Yard
 56102 Thornaby

56103 Old Oak Common
 56104 Old Oak Common
 56105 Old Oak Common
 56106 Wembley Yard
 56107 Ferrybridge
 56108 Thornaby
 56109 Ferrybridge
 56110 Healey Mills
 56111 Thornaby
 56112 Old Oak Common
 56113 Old Oak Common
 56114 Immingham C&W Yard
 56115 Wembley Yard
 56116 Healey Mills
 56117 Wembley Yard
 56118 Old Oak Common
 56119 Healey Mills
 56120 Ferrybridge
 56127 Thornaby
 56128 Nene Valley Railway
 56129 Thornaby
 56133 Old Oak Common
 56134 Healey Mills

Class 57

57001 Crewe LNWR
 57002 Barry Island Railway
 57003 Barry Island Railway
 57004 Crewe LNWR
 57007 Carlisle Kingmoor
 57008 Crewe Gresty Bridge
 57011 Active

Class 58

58001 Barrow Hill
 58002 Eastleigh
 58003 Toton Compound
 58004 Eastleigh
 58005 Toton
 58006 Eastleigh
 58007 Eastleigh
 58008 Toton Compound
 58009 Eastleigh
 58010 Eastleigh
 58011 Eastleigh
 58012 Toton Compound
 58013 Eastleigh
 58014 Toton Compound
 58015 Eastleigh
 58016 Old Oak Common
 58017 Eastleigh
 58018 Eastleigh
 58019 Toton Compound
 58021 Eastleigh
 58022 Crewe DMD
 58023 Toton Compound
 58026 Eastleigh
 58027 Eastleigh
 58028 Toton Compound
 58032 Eastleigh
 58033 Eastleigh
 58034 Eastleigh
 58035 Wembley Yard
 58036 Toton Compound
 58037 Eastleigh
 58040 Eastleigh
 58042 Eastleigh
 58045 Old Oak Common
 58046 Eastleigh
 58047 Eastleigh
 58048 Old Oak Common
 58049 Eastleigh
 58050 Eastleigh

Class 60

60001 Toton Compound
 60002 Toton
 60003 Toton
 60004 Toton
 60006 Toton
 60008 Toton Compound
 60011 Toton
 60015 Toton
 60019 Toton
 60027 Toton
 60028 Toton
 60030 Toton
 60032 Toton
 60033 Margam
 60036 Toton Compound
 60037 Margam
 60038 Toton
 60045 Toton
 60048 Toton
 60050 Toton
 60055 Toton
 60057 Toton Compound
 60058 Toton
 60060 Crewe EMD
 60061 Toton
 60064 ??
 60067 Margam
 60069 Toton Compound
 60070 Immingham
 60072 Toton Compound
 60073 Toton
 60078 Toton
 60080 Toton
 60081 Toton
 60086 Toton
 60087 Toton
 60088 Toton
 60090 Toton
 60092 Toton
 60095 Toton
 60098 Toton
 60099 Toton
 60500 Toton

Class 66

66031 Toton
 66131 Toton
 66404 Glasgow Works

Class 67

67008 Toton
 67010 Toton
 67018 Toton

Class 73

73103 Meldon
 73104 Allely's Studley
 73105 Battlefield Line
 73114 Battlefield Line
 73117 Meldon
 73134 Weardale Railway
 73139 Weardale Railway
 73141 Eastleigh Works
 73201 Long Marston
 73203 St Leonards
 73207 Tonbridge West Yard
 73210 Stewarts Lane
 73211 Stewarts Lane

Class 86

86205 Long Marston
 86212 East Ham
 86215 Long Marston
 86217 Long Marston
 86218 Long Marston

86223 Long Marston
 86226 Long Marston
 86228 Long Marston
 86229 Long Marston
 86230 Long Marston
 86231 Long Marston
 86232 Long Marston
 86233 Crewe EMD
 86234 Long Marston
 86235 Long Marston
 86242 Long Marston
 86245 Long Marston
 86246 Long Marston
 86247 Long Marston
 86248 Long Marston
 86250 Long Marston
 86251 Long Marston
 86258 Long Marston
 86260 Long Marston
 86424 Crewe LNWR
 86602 Crewe LNWR
 86623 Crewe LNWR
 86633 Crewe LNWR
 86635 Crewe Basford Hall

Class 87

87003 Long Marston
 87004 Long Marston
 87006 Long Marston
 87009 Long Marston
 87010 Long Marston
 87011 Long Marston
 87013 Long Marston
 87014 Long Marston
 87017 Long Marston
 87018 Long Marston
 87020 Long Marston
 87021 Long Marston
 87022 Long Marston
 87023 Long Marston
 87025 Long Marston
 87027 Long Marston
 87028 Long Marston
 87029 Long Marston
 87030 Long Marston
 87031 Tyseley
 87032 Long Marston
 87033 Long Marston
 87034 Long Marston

Class 90

90017 Crewe EMD
 90022 Crewe EMD
 90023 Crewe EMD
 90025 Crewe EMD
 90027 Crewe EMD
 90030 Crewe EMD
 90031 Crewe EMD
 90032 Crewe EMD
 90033 Crewe EMD
 90034 Crewe EMD
 90037 Crewe EMD
 90038 Crewe EMD
 90040 Crewe EMD
 90050 Crewe EMD

Class 92

92005 Crewe EMD
 92006 Crewe EMD
 92008 Crewe EMD
 92010 France
 92012 Crewe EMD
 92014 Crewe EMD
 92016 Crewe EMD
 92018 Crewe EMD

92020 Crewe EMD
 92021 Crewe EMD
 92023 Crewe EMD
 92024 Crewe EMD
 92025 Crewe EMD
 92027 Crewe EMD
 92031 Crewe EMD
 92032 Brush Traction Loughborough
 92033 Crewe EMD
 92035 Crewe EMD
 92040 Crewe EMD
 92044 Brush Traction Loughborough
 92045 Crewe EMD
 92046 Crewe EMD