

WNXX

Review Magazine Issue 041, September 2008

ISSN 1757-3157



55016 retires service at Peak Rail 28/09/08
Photo: IF



37409 awaits collection from Bo'Ness 21/09/08
Photo: L Sutherland

Contents

Location Amendments, Additions & Disposals: 2-3
News Review: 3-15
Stock Changes: 16-19
Locations List: 20-22

Stored / Withdrawn

08757 WNTS Toton
 37401 WNTR Bescot
 37417 WNTR Bescot
 60066 WNTS Toton
 90039 WNTR Crewe EMD

Re-listed / Other Additions

08350 MBDL Midland Railway Centre (later to Ron Hull Jr. Rotherham)
 20142 MBDL Llangollen Railway
 37409 Bo'ness & Kinneil Railway (later to Barrow Hill)
 37414 Weardale Railway
 37422 WNTS Eastleigh
 56301 RCJA Brush Traction, Loughborough
 56302 RCJA Brush Traction, Loughborough

Revised

57002 XHHP Carlisle Kingmoor – Crewe LNWR (corrected correction, later to Carlisle Kingmoor)
 57003 XHHP Crewe LNWR – Carlisle Kingmoor (corrected correction, later to Crewe Gresty Bridge)

Relocated

08350 MBDL Midland Railway Centre – Heanor, Langley Mill – Ron Hull Jr. Rotherham
 20166 HNRL Bodmin & Wenford Railway – Battlefield Line
 37409 Bo'ness & Kinneil Railway – Barrow Hill
 37411 WNTS Knottingley – Doncaster Carr – Warrington – Eastleigh
 37510 XHHP Carnforth – Carlisle Kingmoor
 37601 XHHP Brush Traction, Loughborough – Crewe Gresty Bridge
 37603 XHHP Brush Traction, Loughborough – Crewe Gresty Bridge
 37683 Long Marston – Barrow Hill
 47811 DFLH Crewe LNWR – Tilbury – Dagenham
 47829 XHHP Crewe Gresty Bridge – Allely's, Studley – Long Marston
 47841 HNRS Dagenham – Tilbury – Barrow Hill
 56006 WNXX Knottingley – Barrow Hill
 57002 XHHP Crewe LNWR – Carlisle Kingmoor – Glasgow Works
 57003 XHHP Carlisle Kingmoor – Crewe Gresty Bridge
 58001 WNXX Knottingley – Barrow Hill
 58015 WZFS Eastleigh – Wembley Yard – Dollands Moor – France (for Spain, exported)
 58027 WZFS Eastleigh – Wembley Yard – Dollands Moor – France (for Spain, exported)
 58047 WZFS Eastleigh – Northam – Eastleigh – Wembley Yard – Dollands Moor – France (for Spain, exported)
 58050 WZFS Eastleigh – Wembley Yard – Dollands Moor – France (for Spain, exported)
 60033 WNTS Margam – Newport ADJ – Bescot Yard – Toton
 60037 WNTS Margam – Newport ADJ – Bescot Yard – Toton
 60067 WNTS Margam – Newport ADJ – Bescot Yard – Toton
 60072 WNTS Toton Compound – Toton (later reinstated)
 60098 WNTS Toton – Toton Compound
 66404 XHHP Glasgow Works – Carlisle Kingmoor
 73201 SBXL Long Marston – Willesden PRDC – St Leonards
 87010 SBXL Long Marston – Stafford – Crewe LNWR
 87022 SBXL Long Marston – Stafford – Crewe LNWR
 87028 SBXL Long Marston – Stafford – Crewe LNWR

Reinstated

37087 XHNC (Carlisle Kingmoor)
 37194 XHNC (Carlisle Kingmoor)
 37261 XHNC (Carlisle Kingmoor)
 47739 COLO (Eastleigh Works)
 47786 MBDL (Carnforth)
 57004 XHNC (Crewe LNWR)
 60072 WFMS (Toton)
 60075 WCAN (Toton)
 60079 WCAN (Toton)
 60092 WCBK (Toton)
 66404 XHIM (Carlisle Kingmoor)
 92012 WFMU (Crewe EMD)

Preservation / Private Ownership / Industrial

73210 MBEL Stewarts Lane (later to Mid Norfolk Railway)

Exported

58015 WZFS Spain

58027 WZFS Spain

58047 WZFS Spain

58050 WZFS Spain

Rebuilt

None

Disposals

31188 TJ Thomson, Stockton

02/09/08

Eurovan convoy...

Retimed to run a little later than advised Colas 47727 was utilised to collect 87010 87022 and 87028 (all SBXL) from Long Marston for transfer to Crewe LNWR. Following a rather lengthy stop over in the yard at Worcester due to pathing and route issues in the Birmingham area the convoy proceeded towards Crewe overnight.



47727 with 87022 87028 and 87010 in tow at Worcester Shrub Hill 02/09/08
Photo: IF

20166...

The transportation by road of 20166 (HNRL) from the Bodmin & Wenford Railway to the Battlefield Line is set to take place shortly.

03/09/08

A rather colourful 56312 at Wansford 04/09/08

Photo: B Pizer

Eurovan convoy...

Due to an administrative issue the transfer of 87010 87022 and 87028 (all SBXL) only got as far as Stafford and the three Crewe bound 87s have been dropped off in the engineers sidings to the south of Stafford station. Their transfer to LNWR is set to be completed late today.

MTU...

43311 (IECP) has been released from re-engineering at Brush Traction being hauled north from Loughborough to Neville Hill today.

04/09/08

Eurovan convoy...

Still at Stafford today even though 47727 was despatched north last night to finalise the transfer of 87010 87022 and 87028 (all SBXL) to Crewe LNWR. Maybe tonight...



20166...

Noted heading north on a low loader via the M5 late afternoon 20166 (HNRL) has been moved up from Bodmin to the Battlefield Line.

05/09/08

Eurovan convoy...

The transfer of 87010 87022 and 87028 (all SBXL) from Long Marston to Crewe LNWR via a stop over at Stafford has been completed.

66404...

Following attention at Glasgow Work 66404 (XHHP) was brought south to Carlisle Kingmoor on the 2nd.

56312...

No longer exhibit D as the planned movement to and appearance of 56312 at the EWS Knottingley do has been cancelled. The family and friends event at Knottingley

(see below) is now, according to the Royal Scots Grey website, open to the general public. 56312 is to remain at Wansford until re-certified and thoroughly tested then enter traffic directly from there.



37676 on view at LaFarge 04/09/08

Photo: IF



57003 at Carlisle 05/09/08 en route to Crewe

Photo: D Collen-Jones

With regards to its recent livery embellishments, certainly eye catching but not one for the purists, Hanson Traction have advised that 'Artemis' is the name for 56312 and that the others will be receiving their God / Goddess names in due course. Each Class 56 is being out-shopped in an independent livery scheme, 56311 was grey whilst 56128 / 56313 might have a blue base. These colour schemes are interim pending an application of the livery of whoever is hiring the locomotive *if* they require that their livery be applied.

86233...

Swift Rail advise that the sale of 86233 has fallen thorough and that it is now being re-offered for sale.

Knottingley...

Although as stated on the RSG website that the Knottingley event tomorrow is now open to the general public it has been advised that there is only a limited number of places available for the general public and

family members and friends attend. Further exhibits are set to include 66050 (WBAN) and 67029 (WAAN), taken north from Toton this afternoon, 45112 (NRLO) from Barrow Hill and 59202 (WDAK) which has been retained on workings in the north since tyre turning at Toton a couple of days ago.

57002...

Now in DRS colours 57002 (XHHP) has been dragged north from Crewe to Carlisle.

07/09/08

DRS Notes...

Two transfers on the 5th not yet recorded were the movement north from Carnforth back to Carlisle Kingmoor by 47832 of 37510 (XHHP) which, now in base DRS colours, is ready to have the 'compass' decals applied whilst 57003 (XHHP), still in Freightliner green, was taken south from Carlisle by 66403 presumably to either Crewe LNWR or Crewe Gresty Bridge. 37069 (XHNC) has received the 'compass' livery whilst 66412 is now adorned with Malcolm's' decals.

Knottingley...

On display or involved with the special workings connected with yesterdays EWS do at Knottingley were 09201 37411 37670 45112 47805 55022 56006 58001 59202 60029 66011 66050 and 67029. During the event a suitably tidied up 66050 was named 'EWS Energy' which begs the question, are the other sectors going to follow suit...

08757...

Since arriving at Toton from Acton 08757 has been stored WNTS.

08/09/08

37683...

For overhaul and transformation to a DRS machine 37683 has been transported north from Long Marston to Barrow Hill. It was noted en route on a low loader traversing the M40 mid afternoon.



37683 on the M1 08/09/08 en route to Barrow Hill
Photo: Anon

Assignments...

37411 (WNTS) at Knottingley has been assigned for transfer to Eastleigh whilst Freightliner stalwart 86607 (DFNC) has been scheduled for an F exam at Crewe LNWR.

WFMS 60s...

60007 60029 60035 and 60051 have been reallocated to a new pool coded WFMS which is something to do with fleet management and the forthcoming autumn RHTT (sandite) season.

MBEL 92s...

92010 92028 92038 and 92043, the four Class 92s in use with SNCF have been reallocated from WZGF, they were technically squatting in the Class 56 French pool anyway, to the MBEL pool.

09/09/08

Bones...

58047 (now added to the WZFS allocation, reallocated from WZFF) has been moved the short distance from Eastleigh to Northam for tyre turning whilst 58015 and 58027 (both WZFS) are on their way abroad having being moved from Eastleigh to Wembley Yard in the consist of today's 6M44 service behind 66069. At Eastleigh 58050 (WZFS) is still being prepared and it would appear that 58047 has replaced 58021 (WZFS) in this batch being prepared to go abroad.

Tugs and a Dyson...

60066 has been stored WNTS at Toton swapping places with 60075, back from store and reinstated to the WCAN pool from WNTR whilst 92012 at Crewe EMD has been reinstated from WNTS to WFMU.

DRS Notes...

66404 recently returned to Carlisle following repairs at Springburn has been reinstated to the XHIM pool however this change of status is fairly academic as it and most of the rest of the 66401 to 66410 batch due to come off lease at some point are sidelined at Kingmoor. Only 66401 66403 and 66405 have been seeing regular use of late. 37601 (XHHP) has been noted at Brush Traction, Loughborough in full DRS compass livery.

10/09/08

Bones...

58047 (WZFS) has been returned to Eastleigh. It and 58050 (WZFS) are booked for transfer from Eastleigh to Wembley via tomorrow's 6M44 working. 58021 (WZFS) is currently in bits at Eastleigh but inclusion in future batches of Class 58 to be used in Europe is quite probable.

43321...

Cross Country power car 43321 (EHPC), the former 43121, has been released from re-engineering at Brush Traction and made its own way north today, with a barrier coach, from Loughborough to Craighentinn via the WCML.



58047 Mitre Bridge 11/09/08
Photo: J Glover

11/09/08

Bone...

Only 58047 (WZFS) has been transferred from Eastleigh to Wembley Yard, 58050 (WZFS) hasn't been released yet. 58047 was moved up to London in the consist of today's 6M44 working behind 66088.

DRS 37s...

37087 37194 and 37261 have been reallocated to the XHNC pool and reinstated from store at Kingmoor. At Barrow Hill the repair of 37682 (HNRS) for DRS is progressing whilst 37683, a recent arrival at Barrow Hill from Long Marston, has been started and run up for systems testing prior to entering the workshop for overhaul for DRS.

XC Power Cars...

43007 43178 and 43184 (all EHPC) undergoing re-engineering at Brush Traction have been renumbered to 43207 43378 and 43384 respectively.

12/09/08

Bones...

58015 and 58027 (both WZFS) have been moved down from Wembley to Dollands Moor to await despatch abroad. Their departure will be somewhat dependent on the re-opening of the Channel Tunnel to traffic after yesterday's lorry on a shuttle train fire. 58047 (WZFS) remains at Wembley whilst 58050 (WZFS) is still at Eastleigh.

13/09/08

37 on the move...

37411 (WNTS) has left Knottingley being noted on the first leg of its transfer south passing through Doncaster with 66137 and 66166 en route to Carr loco.

47s on the move...

47811 (DFLH) has been transported down by road from Crewe to Dagenham where it takes up 'super shunter' duties allowing for the removal from Dagenham of 47841 (now HNRS) which has been sold. 47841 was taken to Tilbury for loading to road transport and, en route to Barrow Hill, was later noted on the M1 near London late afternoon heading north. 47841 does have a future...



En route north from Dagenham 47841 at Tilbury 13/09/08 loaded for transfer to Barrow Hill
Photo: Anon

37248...

A press release by the Growler Group concerning 37248 has been circulated...

Another significant milestone for the Growler Group has been reached with the signing of an agreement that sees them become custodians of class 37 locomotive no. 37248, owned by three Growler Group working members, and currently on hire to the West Coast Railway Company through the venture 'Type Three Traction'.

By placing the locomotive formally into the care of the Growler Group, the locomotive will be looked after into the future by a strong, established group of people who care passionately about class 37s and with a proven track record of quality restoration and care for its locomotives. It will also give the Group an opportunity to promote itself more widely and remain at the forefront of class 37 preservation by, in the short term at least, having the only 'preserved' class 37 currently operating on the Network Rail system. The locomotive is operated by the West Coast Railway Company, who are responsible for its care and maintenance for the duration of the hire, and operates throughout the UK from the Carnforth base of WCRC.

In recognition of this, and to mark the 10th operational year of 37215 in preservation, which was one of the first class 37s bought for preservation in 1994, the Group has also re-vamped its website at www.thegrowlergroup.org.uk, where full details of all three class 37s and the Group's news and activities can be found.

37411 at Doncaster 14/09/08 en route to Eastleigh from Knottingley

Photo: A Driver



60098 tucked away amongst the weeds in Toton Compound 14/09/08

Photo: Anon



15/09/08

47841...

Following a stop over at Allely's en route from Dagenham 47841 (HNRS) has completed its journey by road to Barrow Hill.

20142...

Re-listed pending developments it has been reported that 20142 (MBDL) at Llangollen has been sold into 'the industry'.

16/09/08

Bones...

58047 (WZFS) has been moved south from Wembley to Dollands Moor where it joins 58015 and 58027 (both WZFS) awaiting transfer abroad whilst 58050 (WZFS) has been released from Eastleigh and was moved up to Wembley in today's 6M44 working.

Full circle...

En route to Eastleigh 37411 (WNTS) has been moved across from Doncaster to Warrington. It was at Warrington that 37411 was originally stopped and placed on decision before transfer to Toton, where it was stored, before being despatched to Knottingley thence Doncaster...

Springburn 57...

57002 (XHHP) was taken north from Carlisle Kingmoor to Glasgow Works yesterday.



58050 is dragged through Eastleigh 16/09/08

Photo: J Harding

18/09/08

EWS 37s...

At Old Oak Common 37419 (WNTS) is being assessed to see if it is a suitable candidate for a return to service whilst at Eastleigh 37406 37410 and 37425 (all WNTS) would appear to be on the comeback trail. 37416 (WNTS) is being utilised for spares at the moment whilst 37411 (WNTS) is still at Warrington waiting passage south to Eastleigh.

Bones away...

58015 58027 58047 from Dollands Moor and 58050 from Wembley to Dollands Moor at some point (all WZFS) have now been taken through to France for forwarding on to Spain.

66502...

Sidelined at Garston 66502 (DFGM) is understood to have been involved in a 'bit of a scrape' in the Liverpool area.

19/09/08

Eurovans...

Due for release from Crewe next week Bulgaria bound 87010 87022 and 87028 (all SBXL) are to be shipped off abroad by sea via Hull rather than through the tunnel and overland across Europe to Bulgaria by rail. It is planned to transport the three Class 87s to Hull from where they will be shipped across to Holland for forwarding up the Rhine and beyond by barge.

37411...

Along with 37417 sent south for repairs 37411 (WNTS) has completed its transfer to Eastleigh.

08350...

Former MRC resident 08350 (MBDL) has been sold for scrap. As far as can be ascertained it was deposited at Hulls, Rotherham some days ago.

37s repainted...

Being prepared at Carnforth for a return to the mainline 37706 has been out shopped in the WCRC maroon colour scheme whilst 37682 (HNRS) is now sporting DRS colours at Barrow Hill.

Body lifts at Barrow Hill...

47237 (ADFL) at Barrow Hill for repairs has been reunited with its bogies following a lift to gain access. Its place on the jacks has been taken by recent arrival 47841 (HNRS) which is receiving attention to its wheelsets and bogies.

20/09/08**08350...**

Further to yesterday's report regarding the removal of 08350 (MBDL) from the MRC for scrap, a green Class 08 has been noted in the yard at Heanor, Langley Mill and it looks like this is 08350 still en route to Rotherham.

47703...

Recently reactivated 47703 (CREL) has been in action on the Wensleydale Railway's gala weekend performing alongside the line's resident 47715 and visitors 31108 and 60040.

22/09/08**Tug 79...**

60079 has been reinstated to the WCAN pool from store at Toton.

Fastline 56s...

56301 and 56302 (both RCJA) have been hauled by 37423 from Derby, where they were sidelined awaiting repairs, to Brush Traction at Loughborough.

BRE 37/4s...

37409 and 37414 have been re-listed on the storage lists in light of their recent sales, 37403 which never left Margam had remained on the lists. 37409, now destined for a career with DRS, has left the Bo'ness & Kinneil Railway and is being brought south by road to Barrow Hill where it is to be overhauled by HNRC. It is unclear what is in the offing for 37403 and speculation is still rife regarding the future of 37414, currently on the Weardale Railway, with variously DRS, Booths, EMR and just about every other scrap dealer mentionable being mentioned. More on these two later no doubt...

9016...

With regards to this coming weekend's farewell do for 9016 at Peak Rail, HNRC and the Peak Rail Operations Manager have requested that, as outlined on the Peak Rail D9016 Farewell web page it be reiterated that in the event of any misbehaviour during the weekend 9016 will be pulled from running. "Peak Rail is keen to emphasise that despite the strong feelings amongst some enthusiasts surrounding the locomotives future, the railway will not tolerate any anti-social behaviour over the weekend."

Rumours and speculation as to Gordon Highlander's future continue apace and a web site concerned with a project to try to purchase 9016 has been launched, it can be viewed at this link. HNRC have been approached about this continued speculation and are on record as stating that at the present moment, notwithstanding the fact that it currently isn't on the market, no offers to purchase the locomotive have been received from any UK railway operators.

37682 / 37683...

At Barrow Hill 37682 is on test and 37683 has been admitted for attention. Contrary to reports elsewhere, it should be clarified that 37515 has not been stripped to provide spares for the rejuvenation of 37682 and 37683.

23/09/08**37409...**

Completing its transfer south from Scotland by road 37409 has been off loaded at Barrow Hill.

08350...

Pinned down at last. 08350 had been at Heanor's but was delivered to Hulls, Rotherham late last week. It is still intact.

24/09/08**Margam trio...**

60033 60037 and 60067 (all WNTS) have been removed from Margam and are to go to Toton. The first leg of their journey today, to Newport, was behind 66206 running as 0253 to ADJ.



66206 with 60033 60067 and 60037 at Stormy Bank 24/09/08
Photo: P Trotter

Colas 47...

Being readied for release into traffic 47739 at Eastleigh Works has been reinstated to the COLO operational pool.

Highway patrol...

47829 (XHHP) has been extracted from Crewe Gresty Bridge and is being transported by road to Long Marston. It was noted traversing the M42 late afternoon, on a low loader, probably heading for an overnight lay over at Allely's.

73s...

73201 (SBXL) has emerged from Long Marston and, reportedly St Leonards bound, was taken south today by 66723. 73210 (MBEL) is booked for transfer from Stewarts Lane to Dereham tomorrow.

08955...

Confirming that its proposed sale had fallen through 08955, currently residing in Bescot Yard, has been reallocated to WNXX from the WNSO sold loco pool.

90039...

Sidelined at Crewe EMD 90039 has been stored WNTR.

Executive sandite...

67029 and 82146, its regular partner usually to be found bolted to either end of the EWS executive train, have been out and about either side of a RHTT set testing the concept of operating Rail Head Treatment Trains in this mode rather than top and tailing with two locomotives.

No one said it had to be pretty...

Freightliner's Powerhaul...



25/09/08

60092 60100 and 60031 storm away from Toton 26/09/08

Photo: R Tranmer

Tugs...

Released into traffic today, noted leaving Toton with 60031 and 60100 on the 6M87 working, 60092 has been reinstated from store at Toton. It was initially allocated to the WFMS sandite holding pool before being reallocated to WCBK. 60035 has also been transferred from the WFMS sandite holding pool to WCAK. 60033 60037 and 60067 (all WNTS) en route to Toton from Margam are still at Newport. As to whether this increase in the Class 60 fleet is connected with the news that EWS are *possibly* on the verge of pulling the plug with their Class 37 fleet, this remains to be seen...

73s...

73136 has taken 73210 (MBEL) from Stewarts Lane to the Mid Norfolk Railway whilst 73201 (SBXL) is at Willesden PRDC awaiting forwarding to St Leonards.



73210 arrives at Wymondham 25/09/08
Photo: P Clay



37682 37683 and 97302 undergoing attention at Barrow Hill 25/09/08
Photo: HNRC

26/09/08

EWS 37s...

The proverbial plug is being pulled, albeit maybe not for good yet as sandite looms large on the calendar and there's the winter snowplough jobs in Scotland to consider. 37401 and 37417 (both WKBN) have been assigned for N ONE at Eastleigh, 37401 due to go south from Warrington overnight tonight. 37422 at Eastleigh has been stored WNTS already, it had been out of use at Eastleigh allocated to WFMU. Any other work with other members of the fleet at Eastleigh should by now have stopped.

Margam trio...

60033 60037 and 60067 (all WNTS) were moved up from Newport to Bescot Yard yesterday evening behind 66141 and today have been forwarded on to Toton behind 66063.

73201...

Potentially for use with GBRf 73201 (SBXL) has completed its transfer to St Leonards, the final leg of its journey from Tonbridge being completed behind 66702.

58001...

Not to be returned to Barrow Hill from Knottingley, it has been indicated. European contract use beckons...

MTU...

43357 (EHPC) has been released from re-engineering at Brush Traction, Loughborough.

27/09/08

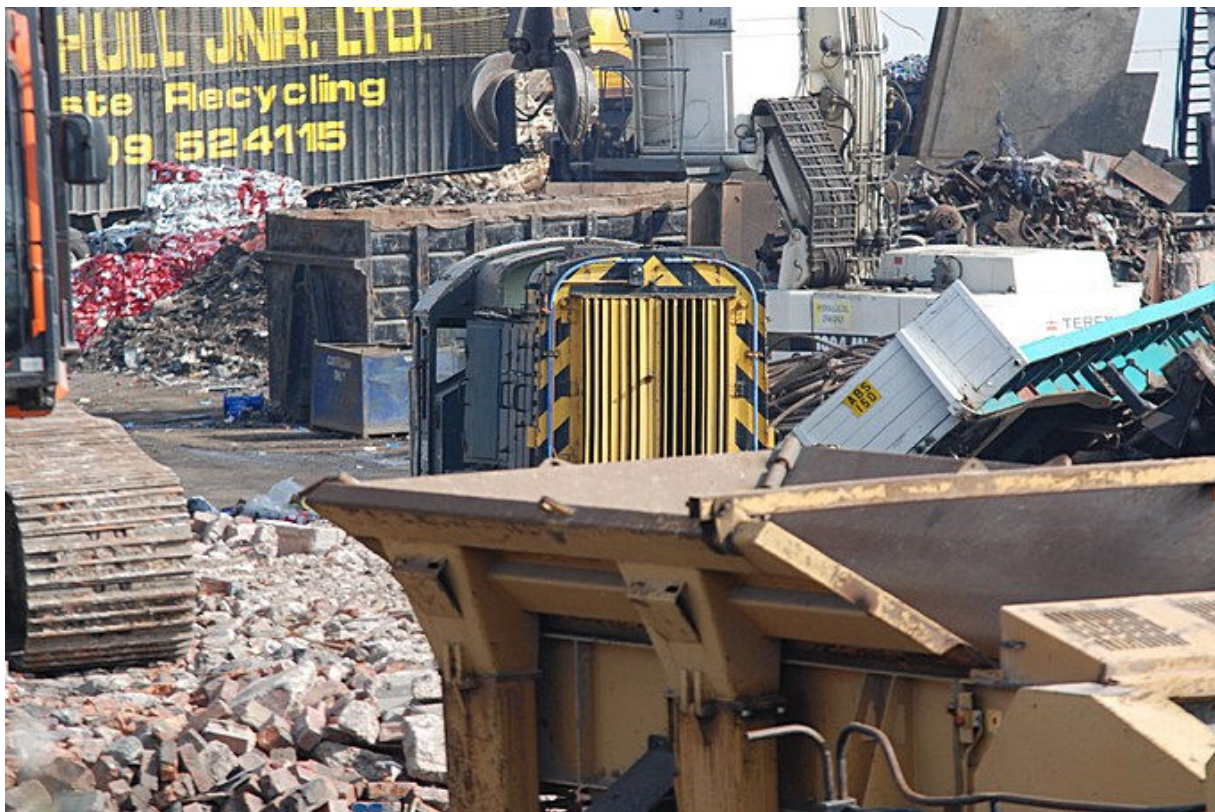
EWS 37s...

Eastleigh bound 37401 and 37417 (both WKBN) had been stabled together at Didcot to await transfer to Eastleigh and store but the need for RETB equipped traction for a Cambrian ballast job has resulted in 37401 and 37417 being despatched north from Didcot to Bescot this afternoon for a return to traffic.



66702 73201 and 73107 at Tonbridge 26/09/08

Photo: S Hatcher



08350 Ron Hull's, Rotherham 26/09/08

Photo: D Shaw



37417 and 37401 at Didcot 27/09/08 before being pressed back into service
Photo: S Counsell

DRS Convoy...

37423 has been to Loughborough to collect and transfer to Crewe Gresty Bridge 20309 (XHMW) 37601 and 37603 (both XHHP).

Disposal...

The scrapping of 31188, stored in January 1999, has been undertaken at Thomson's, Stockton. Only its frame and bogies were viewable earlier today, RIP.

28/09/08

47829...

47829 (XHHP) was, it has now been established, delivered to Long Marston on the 25th.

9016...

Its farewell weekend of running complete 55016 will shortly be readied for removal from Peak Rail by road to Long Marston. In light of the reaction to the purchase of 55016 and the possibility of it being dismantled, this is still an option, HNRC are inviting offers / expressions of interest for the purchase of the locomotive (without the current bogies as these are sold already) intact. There's only a week to get your bids in and there are a number of terms and conditions to meet. Full details can be viewed on the for sale page.

29/09/08

Roy's back...

47786 (MBDL) has returned to service with an evening test run, no problems reported, from Carnforth to Hellifield and back. 47851 and 57601 went along as insurance / load.

EWS 37s...

Following their weekend reprieve on the Cambrian ballast workings 37401 and 37417 (both WKBN) were returned to Bescot in the early hours of this morning. They are still assigned for N ONE at Eastleigh a couple of days ago.

DRS additions...

37682 and 47841, both at Barrow Hill, have been reallocated from HNRS to the DRS XHHP holding pool. This development confirms the latter's future lies with the blue team. 37683 also being attended to at Barrow Hill, for DRS, remains unallocated.

30/09/08

EWS 37s...

Still at Bescot awaiting transfer on to Eastleigh 37401 and 37417 have been stored WNTR.

Spain can wait...

It seems that a European jolly for 58001 (WNXX) will have to wait a little while yet as it, along with 56006 (WNXX), has been returned to Barrow Hill from Knottingley.

Reinstatements...

DRS have reinstated 57004 to the XHNC pool whilst EWS have reinstated 60072 to the WFMS pool. The return of the latter is notable as it had been dumped in the compound at Toton.

Robin of Templecombe...

Fresh from Eastleigh Works 47739 (COLO) has been named Robin of Templecombe at Templecombe today.

Eurovans...

Although it had been envisaged that they would be on their way by now 87010 87022 and 87028 (all SBXL) are still at Crewe LNWR ready for despatch east. The delay is purely down to the logistics involved - ships, loading and unloading facilities, barges and road transport - in getting these three 87s across to Bulgaria. It should be noted that when the time comes, the first leg of their journey, from Crewe to Hull, will be by road transport.

Stock Changes

041 0809 16/22

Class 08			TO WFMU-WCAN		TO WCAI-WFMU
08757	TO WSSK-WNTS		TO WCAN-WCAK		TO WFMU-WCAK
08955	WQ WNSO-WNXX	60018	TO WCAK-WCAN	60087	TO WFMU-WCAN
		60020	TO WFMU-WCAI		TO WCAN-WCAI
Class 37			TO WCBM-WCBN	60091	TO WCBM-WCBN
			TO WCBN-WCBI	60092	TO WNTR-WFMS
37087	KM XHHP-XHNC	60021	TO WCBM-WCBN	60093	TO WFMS-WCBK
37194	KM XHHP-XHNC		TO WCBM-WCBN		TO WCAN-WCAI
37261	KM XHHP-XHNC		TO WCBM-WCBN	60099	TO WCAI-WFMU
37401	TO WKBW-WNTR	60024	TO WCAI-WFMU	60100	TO WCAN-WCAK
37417	TO WKBW-WFMU		TO WFMU-WCAI		TO WCAK-WFMU
	TO WFMU-WKBW	60029	TO WCAK-WFMU		TO WFMU-WCAK
	TO WKBW-WFMU		TO WFMU-WFMS		
	TO WFMU-WKBW		TO WFMS-WCAN	Class 66	
	TO WKBW-WNTR		TO WCAN-WCAK		
37422	TO WKBW-WFMU	60031	TO WFMU-WCAK	66001	TO WBAK-WFMU
	TO WFMU-WNTS	60035	TO WFMU-WFMS		TO WFMU-WBAN
37682	BH-HQ HNRS-XHHP		TO WFMS-WCAK	66002	TO WFMU-WBAN
		60039	TO WFMU-WCAI		TO WBAN-WBAI
Class 43		60040	TO WCAK-WCAN		TO WBAN-WBAK
			TO WCAN-WCAK		TO WBAN-WBAN
43007	NL-EC EHPC RN 43207	60042	TO WCAN-WCAN	66005	TO WBAN-WBAN
43119	EC IECP RN 43319		TO WCAN-WCAI		TO WBAN-WBAI
43178	NL-EC EHPC RN 43378	60043	TO WCAI-WCAN		TO WBAN-WBAM
43184	NL-EC EHPC RN 43384		TO WCAN-WCAM	66006	TO WBAN-WFAMU
			TO WCAN-WCAN		TO WFMU-WBAN
Class 47			TO WCAN-WCAI	66007	TO WBAK-WBAN
		60044	TO WFMU-WCAI	66009	TO WBAN-WBAN
47739	HQ-TJ COLS-COLO		TO WCAI-WCAN		TO WBAN-WBAI
47841	FD-HQ DFLH-HNRS		TO WCAN-WFMU		TO WBAN-WBAN
	HQ HNRS-XHHP		TO WFMU-WCAI		TO WBAN-WBAN
		60045	TO WFMU-WCAN	66011	TO WBAN-WBAN
Class 57			TO WCAN-WCAK		TO WBAN-WBAN
			TO WCAK-WCAN	66012	TO WBAN-WBAN
57004	KM XHHP-XHNC	60046	TO WFMU-WCBK		TO WBAN-WBAN
		60048	TO WCAK-WFMU		TO WBAN-WBAN
Class 58			TO WFMU-WCAI		TO WBAN-WBAN
		60049	TO WCAK-WFMU	66013	TO WBAN-WBAN
58047	TO WZFF-WZFS	60051	TO WFMU-WFMS		TO WBAN-WBAN
		60059	TO WFMU-WCBK		TO WBAN-WBAN
Class 59			TO WCBK-WFMU	66014	TO WBAN-WBAN
		60060	TO WCAI-WCAN		TO WBAN-WBAN
59201	TO WFMU-WDAK		TO WCAN-WFMU	66015	TO WBAN-WBAN
	TO WDAK-WFMU		TO WFMU-WCAI		TO WBAN-WBAN
	TO WFMU-WDAK	60062	TO WCAN-WCAI	66016	TO WBAN-WBAN
59204	TO WDAK-WFMU	60063	TO WCAN-WCAI		TO WFMU-WBAN
	TO WFMU-WDAK	60065	TO WCAN-WCAI		TO WBAN-WBAN
			TO WCAI-WCAN	66017	TO WBAN-WBAN
Class 60			TO WCAN-WCAI		TO WBAN-WBAN
		60066	TO WCAI-WFMU	66018	TO WBAN-WBAN
60002	TO WFMU-WCBK		TO WFMU-WNTS		TO WBAN-WBAN
	TO WCBK-WCBI	60068	TO WCAI-WCAN		TO WBAN-WBAN
60005	TO WCBM-WFMU		TO WCAN-WFMU		TO WBAN-WBAN
60007	TO WFMU-WFMS		TO WFMU-WCAN	66020	TO WBAN-WBAN
	TO WFMS-WCBN	60071	TO WFMU-WCBI		TO WBAN-WBAN
	TO WCBN-WCBK	60072	TO WNTS-WFMS		TO WBAN-WBAN
60009	TO WCBK-WCBI	60074	TO WCAI-WFMU		TO WBAN-WBAN
	TO WCBM-WFMU	60075	TO WNTR-WCAN	66021	TO WBAN-WBAN
	TO WFMU-WCBI	60076	TO WCAI-WCAN		TO WBAN-WBAN
	TO WCBM-WFMU		TO WCAN-WCAI	66023	TO WBAN-WBAN
	TO WFMU-WCBI	60077	TO WCBN-WCBK		TO WBAN-WBAN
	TO WCBM-WFMU	60079	TO WNTS-WCAN		TO WBAN-WBAN
	TO WFMU-WCBK		TO WCAN-WCAI	66024	TO WBAN-WBAN
60010	TO WCBK-WCBI	60082	TO WCAK-WFMU		TO WFMU-WBAN
	TO WCBM-WCBN		TO WFMU-WCAI		TO WBAN-WBAN
	TO WCBN-WCBK	60083	TO WCAI-WFMU	66025	TO WBAN-WBAN
60012	TO WCBN-WCBK	60084	TO WCAK-WFMU		TO WBAN-WBAN
	TO WCBK-WFMU		TO WFMU-WCAN		TO WBAN-WBAN
60014	TO WCAI-WFMU		TO WCAN-WCAI		TO WBAN-WBAN
	TO WFMU-WCAI	60085	TO WCAI-WFMU	66027	TO WFMU-WBAN
	TO WCAI-WFMU		TO WFMU-WCAI		TO WBAN-WBAN

Stock Changes

041 0809 17/22

66030	TO WBAI-WBAN	66063	TO WBAN-WBAK	66103	TO WFMU-WBBN
	TO WBAN-WBAI		TO WBAK-WBAM		TO WBBN-WBAM
	TO WBAI-WBAN		TO WBAM-WBAN		TO WBAM-WBBN
	TO WBAN-WBAM		TO WBAN-WBAM		TO WBAI-WBBN
66034	TO WBAK-WBAI	66065	TO WBAK-WBAM		TO WBBN-WFMU
	TO WBAI-WBAN	66066	TO WFMU-WBAM		TO WFMU-WBBI
	TO WBAN-WBAK		TO WBAM-WBAI		TO WBBI-WBBN
	TO WBAK-WBAN	66067	TO WBAM-WBAI	66105	TO WBBN-WFMU
66035	TO WBAK-WBAN	66068	TO WBAN-WBAM		TO WFMU-WBBN
	TO WBAN-WBAI		TO WBAM-WBAN	66106	TO WBBN-WBAI
66037	TO WBAN-WBAI		TO WBAN-WBAM		TO WBAI-WBBN
	TO WBAI-WBAN	66069	TO WBAK-WBAN	66107	TO WBBK-WFMU
	TO WBAN-WBAI		TO WBAN-WBAI		TO WFMU-WBBN
	TO WBAI-WBAM	66070	TO WBAI-WBAN		TO WBBN-WBBK
	TO WBAM-WBAN		TO WBAN-WBAI		TO WBBK-WBBN
	TO WBAN-WBAI		TO WBAI-WBAN	66109	TO WBAM-WBAK
66039	TO WBAI-WBAN		TO WBAN-WBAK	66110	TO WBBI-WBBN
	TO WBAN-WBAK		TO WBAK-WBAN		TO WBBN-WBAN
	TO WBAK-WBAI	66074	TO WBAN-WBAK		TO WBAN-WBBN
	TO WBAI-WBAM		TO WBAK-WBAN	66111	TO WBBI-WBBN
66040	TO WBAK-WBAN	66075	TO WBAN-WBAI	66112	TO WBBN-WBBI
	TO WBAN-WBAK		TO WBAI-WBAK		TO WBBI-WBBN
	TO WBAK-WBAN		TO WBAM-WBAN	66113	TO WBBK-WBBN
	TO WBAN-WBAI	66076	TO WBAM-WBAN	66114	TO WBBN-WFMU
	TO WBAI-WBAN		TO WBAN-WBAM		TO WFMU-WBBK
66041	TO WBAN-WBAI	66077	TO WBAK-WBAN	66115	TO WBAN-WBAK
	TO WBAI-WBAN		TO WBAN-WBAI		TO WBAK-WBAN
	TO WBAN-WBAK	66079	TO WBAN-WBAK		TO WBAN-WBAI
66043	TO WFMU-WBAN		TO WBAK-WFMU	66116	TO WBAN-WBAI
	TO WBAN-WBAK		TO WFMU-WBAM		TO WBAI-WBAN
	TO WBAK-WBAN		TO WBAM-WBAK		TO WBAN-WBAK
66044	TO WBAN-WBAI		TO WBAK-WBAN		TO WBAK-WBAN
	TO WBAI-WBAN		TO WBAN-WBAI	66117	TO WBAN-WBAM
66046	TO WBAI-WBAN		TO WBAI-WBAN	66118	TO WBAN-WBAK
	TO WBAN-WBAM	66080	TO WBAM-WBAI		TO WBAK-WBAI
	TO WBAM-WFMU		TO WBAI-WBAM		TO WBAI-WBAN
	TO WFMU-WBAM		TO WBAM-WBAI	66119	TO WBAK-WBAN
	TO WBAM-WBAI	66083	TO WBAN-WBAK	66120	TO WBAM-WBAN
66047	TO WBAN-WBAI	66084	TO WBAN-WBAM		TO WBAN-WBAI
	TO WBAI-WBAM		TO WBAM-WBAN	66121	TO WBAN-WBAK
	TO WBAM-WBAN		TO WBAN-WBAI		TO WBAK-WBAM
66048	TO WBAN-WFMU		TO WBAI-WBAN	66122	TO WBAI-WBAN
	TO WFMU-WBAN	66086	TO WBAN-WBAM		TO WBAN-WBAM
	TO WBAN-WBAI		TO WBAM-WBAN	66124	TO WBAM-WBAN
	TO WBAI-WBAN		TO WBAN-WBAI	66125	TO WFMU-WBAN
	TO WBAN-WBAM	66087	TO WBAI-WBAN		TO WBAN-WBAK
66050	TO WBAM-WFMU		TO WBAN-WBAI	66126	TO WBAN-WBAM
	TO WFMU-WBAM		TO WBAI-WBAN		TO WBAM-WBAI
	TO WBAM-WBAN	66088	TO WBAI-WBAN	66127	TO WBAI-WBAN
66051	TO WBAK-WBAN		TO WBAN-WBAK		TO WBAN-WBAI
	TO WBAN-WFMU		TO WBAK-WBAM		TO WBAI-WBAN
	TO WFMU-WBAI		TO WBAM-WFMU	66128	TO WBAI-WBAN
66053	TO WBAI-WBAN	66089	TO WBAM-WBAN		TO WBAN-WBAK
	TO WBAN-WBAM	66091	TO WBAI-WBAN	66129	TO WBAI-WBAN
	TO WBAM-WBAI		TO WBAM-WFMU		TO WBAN-WBAI
	TO WBAI-WBAN		TO WFMU-WBAM		TO WBAI-WBAN
	TO WBAN-WBAK	66093	TO WBAN-WFMU	66132	TO WBAK-WBAN
66054	TO WBAN-WBAI	66094	TO WBAI-WFMU		TO WBAN-WBAI
	TO WBAI-WBAM		TO WFMU-WBAI	66135	TO WBAN-WBAI
66055	TO WBAI-WBLI		TO WBAI-WBAM		TO WBAI-WBAN
66056	TO WBLN-WBLI	66096	TO WBAM-WBAN	66136	TO WBAK-WBAI
	TO WBLI-WBAK		TO WBAN-WBAI		TO WBAI-WBAN
	TO WBAK-WBAM	66097	TO WBAM-WBAI	66137	TO WBAM-WBAI
	TO WBAM-WBLI		TO WBAI-WBAN		TO WBAI-WFMU
66057	TO WBLI-WBAN	66098	TO WBAN-WBAI	66138	TO WBAM-WFMU
66060	TO WBAN-WBAM		TO WBAI-WBAN		TO WFMU-WBAI
66061	TO WBAN-WBAI		TO WBAN-WBAI		TO WBAI-WBAK
	TO WBAI-WBAN		TO WBAI-WBAN		TO WBAK-WBAM
	TO WBAN-WBAI	66099	TO WBBN-WFMU	66139	TO WBAM-WBAN
	TO WBAI-WBAK		TO WFMU-WBAM		TO WBAN-WBAI
	TO WBAK-WBAI	66100	TO WBAM-WBBN		TO WBAI-WBAM
	TO WBAI-WBAN	66101	TO WBBN-WFMU		TO WBAM-WBAI

Stock Changes

041 0809 18/22

66141	TO WBAI-WBAM	66169	TO WBAM-WBAN	66196	TO WBAK-WBAN
	TO WBAM-WBAI		TO WBAN-WBAI		
	TO WBAI-WBAK		TO WBAI-WBAN		
66142	TO WBAK-WBAI	66170	TO WBAN-WBAI	66197	TO WBAN-WBAI
	TO WBAI-WBAN		TO WBAI-WBAN		
	TO WBAN-WBAI		TO WBAN-WBAM		
66143	TO WBAM-WBAN	66171	TO WBAN-WBAN	66200	TO WBAN-WFMU
66144	TO WFMU-WBAK		TO WBAI-WBAN		TO WBAK-WBAI
66145	TO WBAM-WBAN		66172		TO WFMU-WBAN
66146	TO WBAM-WBAN	66173	TO WBAM-WBAI	66204	TO WBAI-WBAN
	TO WBAI-WBAN		TO WBAI-WBAN		TO WBAN-WBAK
	TO WBAN-WBAI		TO WBAN-WBAI		TO WFMU-WBAN
66147	TO WBAN-WBAK	66174	TO WBAI-WBAN	66207	TO WBAN-WBAI
	TO WBAK-WBAN		TO WBAK-WBAN		TO WBAN-WBAK
	TO WBAN-WBAI		TO WBAI-WBAN		TO WBAN-WBAI
66149	TO WBAM-WBAN	66175	TO WBAM-WBAN	66213	TO WBAI-WBAN
	TO WBAM-WBAN		TO WBAN-WFMU		TO WBAM-WBAN
	TO WFMU-WBAM		TO WFMU-WBAM		TO WBAN-WBAI
66152	TO WBAM-WBAI	66176	TO WBAI-WBAN	66221	TO WBAI-WBAN
	TO WBAI-WBAN		TO WBAN-WBAI		TO WBAN-WBAK
	TO WBAM-WBAK		TO WBAI-WBAN		TO WBAK-WBAN
66153	TO WBAM-WBAN	66177	TO WBAM-WBAI	66227	TO WBAM-WBAI
	TO WBAM-WBAN		TO WBAI-WBAK		TO WBAI-WBAN
	TO WBAK-WBAN		TO WBAM-WBAN		TO WBAM-WBAN
66154	TO WBAM-WBAN	66178	TO WBAM-WBAN	66230	TO WBAM-WBAN
	TO WBAM-WBAN		TO WBAM-WBAN		TO WBAM-WBAN
	TO WBAM-WBAN		TO WBAM-WBAN		TO WBAM-WBAN
66155	TO WBAM-WBAN	66180	TO WBAM-WBAN	66232	TO WBAM-WBAN
	TO WBAM-WBAN		TO WBAM-WBAN		TO WBAM-WBAN
	TO WBAM-WBAN		TO WBAM-WBAN		TO WBAM-WBAN
66156	TO WBAM-WBAN	66182	TO WBAM-WBAN	66237	TO WBAM-WBAN
	TO WBAM-WBAN		TO WBAM-WBAN		TO WBAM-WBAN
	TO WBAM-WBAN		TO WBAM-WBAN		TO WBAM-WBAN
66157	TO WBAM-WBAN	66183	TO WBAM-WBAN	66238	TO WBAM-WBAN
	TO WBAM-WBAN		TO WBAM-WBAN		TO WBAM-WBAN
	TO WBAM-WBAN		TO WBAM-WBAN		TO WBAM-WBAN
66158	TO WBAM-WBAN	66184	TO WBAM-WBAN	66248	TO WBAM-WBAN
	TO WBAM-WBAN		TO WBAM-WBAN		TO WBAM-WBAN
	TO WBAM-WBAN		TO WBAM-WBAN		TO WBAM-WBAN
66159	TO WBAM-WBAN	66185	TO WBAM-WBAN	66250	TO WBAM-WBAN
	TO WBAM-WBAN		TO WBAM-WBAN		TO WBAM-WBAN
	TO WBAM-WBAN		TO WBAM-WBAN		TO WBAM-WBAN
66160	TO WBAM-WBAN	66186	TO WBAM-WBAN	66404	KM XHHP-XHIM
	TO WBAM-WBAN		TO WBAM-WBAN		
	TO WBAM-WBAN		TO WBAM-WBAN		
66162	TO WBAM-WBAN	66187	TO WBAM-WBAN	67002	TO WBAM-WBAN
	TO WBAM-WBAN		TO WBAM-WBAN		TO WBAM-WBAN
	TO WBAM-WBAN		TO WBAM-WBAN		TO WBAM-WBAN
66163	TO WBAM-WBAN	66188	TO WBAM-WBAN	67006	TO WBAM-WBAN
	TO WBAM-WBAN		TO WBAM-WBAN		TO WBAM-WBAN
	TO WBAM-WBAN		TO WBAM-WBAN		TO WBAM-WBAN
66164	TO WBAM-WBAN	66189	TO WBAM-WBAN	67009	TO WBAM-WBAN
	TO WBAM-WBAN		TO WBAM-WBAN		TO WBAM-WBAN
	TO WBAM-WBAN		TO WBAM-WBAN		TO WBAM-WBAN
66165	TO WBAM-WBAN	66192	TO WBAM-WBAN	67013	TO WBAM-WBAN
	TO WBAM-WBAN		TO WBAM-WBAN		TO WBAM-WBAN
	TO WBAM-WBAN		TO WBAM-WBAN		TO WBAM-WBAN
66166	TO WBAM-WBAN	66193	TO WBAM-WBAN	67014	TO WBAM-WBAN
	TO WBAM-WBAN		TO WBAM-WBAN		TO WBAM-WBAN
	TO WBAM-WBAN		TO WBAM-WBAN		TO WBAM-WBAN
66167	TO WBAM-WBAN	66194	TO WBAM-WBAN	67023	TO WBAM-WBAN
	TO WBAM-WBAN		TO WBAM-WBAN		TO WBAM-WBAN
	TO WBAM-WBAN		TO WBAM-WBAN		TO WBAM-WBAN
66168	TO WBAM-WBAN	66195	TO WBAM-WBAN	67025	TO WBAM-WBAN
	TO WBAM-WBAN		TO WBAM-WBAN		TO WBAM-WBAN
	TO WBAM-WBAN		TO WBAM-WBAN		TO WBAM-WBAN

Stock Changes

041 0809 19/22

TO WFMU-WAAN

Class 90

90021	CE WFEF-WFMU
	CE WFMU-WEFE
	CE WFEF-WFMU
90024	CE WFEF-WFMU
	CE WFMU-WEFE
90028	CE WFEF-WFMU
	CE WFMU-WEFE
90035	CE WFEF-WFMU
	CE WFMU-WEFE
90039	CE WFEF-WFMU
	CE WFMU-WEFE
	CE WFEF-WFMU
	CE WFMU-WNTR

Class 92

92001	CE WFMU-WTAE
92002	CE WTAE-WFMU
	CE WFMU-WTAE
92003	CE WTAE-WFMU
	CE WFMU-WTAE
92004	CE WTAE-WFMU
92007	CE WTAE-WFMU
	CE WFMU-WTAE
92010	CE WZGF-MBEL
92011	CE WTAE-WFMU
92012	CE WNTS-WFMU
	CE WFMU-WTAE
92015	CE WTAE-WFMU
	CE WFMU-WTAE
92017	CE WFMU-WTAE
92028	CE WZGF-MBEL
92038	CE WZGF-MBEL
92039	CE WTAE-WFMU
	CE WFMU-WTAE
92041	CE WTAE-WFMU
	CE WFMU-WTAE
92042	CE WTAE-WFMU
	CE WFMU-WTAE
92043	CE WZGF-MBEL

Class 08

08077 LHGS Barton under Needwood
 08345 Long Marston
 08350 Ron Hull Jr Rotherham
 08389 Active / Warrington
 08397 Allerton
 08401 Immingham
 08402 Motherwell
 08411 Colne Valley Railway
 08418 Bescot Yard
 08441 Colne Valley Railway
 08442 Eastleigh
 08451 Longsight
 08460 Colne Valley Railway
 08480 Toton
 08485 Active / Carlisle Yard
 08489 Millerhill
 08500 Doncaster Carr
 08503 Heanor Langley Mill
 08509 Immingham
 08510 Eastleigh
 08511 Barry Island Railway
 08512 Doncaster Carr
 08516 Bristol Barton Hill
 08517 Long Marston
 08528 Bescot Yard
 08535 RMS Locotec Wakefield
 08536 Derby Etches Park
 08540 Toton Compound
 08543 Bescot Yard
 08561 Doncaster Carr
 08569 Doncaster Carr
 08577 Bescot Yard
 08580 Bescot Yard
 08582 Doncaster Carr
 08587 Margam
 08593 Toton Compound
 08597 Thornaby
 08632 Bescot
 08651 Bescot Yard
 08664 Doncaster Carr
 08665 Healey Mills
 08668 Long Marston
 08670 Motherwell
 08683 Goodman's Sutton Coldfield
 08689 Toton Compound
 08694 Old Oak Common
 08695 Barrow Hill
 08697 Derby Etches Park
 08698 Thornaby
 08699 Allely's Studley
 08709 Bescot
 08715 Carlisle Currock
 08728 Long Marston
 08731 Merehead
 08736 Long Marston
 08745 Southampton Maritime
 08757 Toton
 08765 Eastleigh
 08770 Margam
 08775 Bescot
 08783 Toton
 08798 Doncaster Carr
 08807 AV Dawson Middlesbrough
 08809 Allely's Studley
 08813 Long Marston
 08824 Crewe EMD
 08825 Battlefield Line
 08826 Merehead
 08827 Long Marston
 08828 Bescot Yard
 08842 Bescot
 08854 Margam
 08856 Didcot
 08866 Doncaster Carr
 08869 Long Marston

08872 Immingham
 08877 Wigan CRDC
 08884 Bescot Yard
 08887 Longsight
 08888 Millerhill
 08890 Eastleigh
 08896 Goodman's Sutton Coldfield
 08900 Margam
 08905 Bescot Yard
 08912 AV Dawson Middlesbrough
 08918 Old Oak Common
 08919 Old Oak Common
 08920 Bescot Yard
 08924 Motherwell
 08925 Doncaster Carr
 08928 Long Marston
 08933 Hoo Junction
 08941 Doncaster Carr
 08953 Doncaster Carr
 08954 Allerton
 08955 Bescot Yard

Class 09

09003 Margam
 09006 Doncaster Carr
 09008 Bescot Yard
 09009 Stewarts Lane
 09010 Hither Green
 09011 Margam
 09012 Hither Green
 09013 Toton Compound
 09015 Margam
 09016 St Blazey
 09018 Hither Green
 09020 Margam
 09024 Eastleigh
 09102 Margam
 09103 Ayr
 09104 Thornaby
 09107 Doncaster Carr
 09202 Doncaster Carr
 09203 Crewe EMD
 09204 Tyne Yard
 09205 Thornaby

Class 20

20016 Long Marston
 20032 Long Marston
 20057 Long Marston
 20072 Long Marston
 20081 Long Marston
 20088 Long Marston
 20092 Barrow Hill
 20105 Barrow Hill
 20119 Barrow Hill
 20121 Barrow Hill
 20132 Barrow Hill
 20138 Long Marston
 20142 Llanguollen Railway
 20145 Kingsbury
 20166 Battlefield Line
 20197 Bodmin & Wenford Railway
 20215 Long Marston
 20314 Brush Traction Loughborough
 20902 Long Marston
 20903 Long Marston
 20904 Barrow Hill
 20906 Crewe LNWR

Class 31

31107 Derby RTC
 31166 Wensleydale Railway
 31301 Long Marston
 31415 Meldon
 31422 Tyseley

31423 Long Marston
 31437 Long Marston
 31439 Long Marston
 31461 Battlefield Line
 31465 Derby RTC
 31468 Derby RTC
 31556 East Lancashire Railway

Class 33

33019 Battlefield Line
 33021 Tyseley
 33029 Carnforth
 33030 Carnforth
 33202 Gloucester

Class 37

37023 Brush Traction Loughborough
 37029 Brush Traction Loughborough
 37042 Doncaster Carr
 37046 Tyne Yard
 37057 Barrow Hill
 37058 Tyne Yard
 37077 Eastleigh
 37165 Carnforth
 37170 Barrow Hill
 37196 Tyne Yard
 37197 Brush Traction Loughborough
 37198 Great Central Railway
 37201 Barrow Hill
 37203 Bescot Yard
 37214 Carnforth
 37221 Tyne Yard
 37238 Tyne Yard
 37293 Tyne Yard
 37294 Crewe DMD
 37372 Barrow Hill
 37377 Eastleigh
 37401 Bescot
 37402 Toton
 37403 Margam
 37405 Toton
 37406 Eastleigh
 37409 Barrow Hill
 37410 Eastleigh
 37411 Eastleigh
 37412 Margam
 37413 Margam
 37414 Weardale Railway
 37415 Margam
 37416 Eastleigh
 37417 Bescot
 37418 Allely's Studley
 37419 Old Oak Common
 37421 Motherwell
 37422 Eastleigh
 37425 Eastleigh
 37426 Crewe DMD
 37427 Motherwell
 37428 Margam
 37503 Doncaster Carr
 37510 Carlisle Kingmoor
 37515 Barrow Hill
 37516 Doncaster Carr
 37517 Carnforth
 37521 Doncaster Carr
 37601 Crewe Gresty Bridge
 37603 Crewe Gresty Bridge
 37604 Brush Traction Loughborough
 37668 Carnforth
 37669 Margam
 37670 Knottingley
 37671 Tyne Yard
 37672 Barrow Hill
 37675 Margam
 37676 Carnforth
 37677 CF Booth Rotherham

37680 LaFarge Hope
 37682 Barrow Hill
 37683 Barrow Hill
 37684 Margam
 37685 Carnforth
 37689 Doncaster Carr
 37692 Margam
 37693 Tyne Yard
 37696 Long Marston
 37698 Margam
 37704 TJ Thomson Stockton
 37706 Carnforth
 37707 Bescot Yard
 37709 Millerhill
 37710 Carnforth
 37717 Carnforth
 37796 Tyne Yard
 37798 Margam
 37886 Millerhill
 37890 Margam
 37891 Tyne Yard
 37893 Bescot Yard
 37895 Bescot Yard
 37896 Margam
 37898 Long Marston

Class 47

47145 Carlisle Kingmoor
 47150 Crewe Basford Hall
 47194 Carnforth
 47236 Carnforth
 47289 Crewe Basford Hall
 47295 Long Marston
 47309 TJ Thomson Stockton
 47355 Carnforth
 47358 TJ Thomson Stockton
 47363 Carnforth
 47368 Carnforth
 47370 Ipswich
 47488 Barrow Hill
 47489 Carnforth
 47525 Carnforth
 47526 Carnforth
 47550 Goodman's Sutton Coldfield
 47575 Crewe Heritage Centre
 47640 Battlefield Line
 47703 Wensleydale Railway
 47707 Barrow Hill
 47709 Derby RTC
 47714 Brush Traction Loughborough
 47716 Meldon
 47744 Barrow Hill
 47747 Crewe LNWR
 47767 Allely's Studley
 47770 Tyseley
 47772 Carnforth
 47776 Carnforth
 47790 Brush Traction Loughborough
 47791 Barrow Hill
 47799 Old Oak Common
 47810 Barrow Hill
 47811 Dagenham
 47816 Crewe Basford Hall
 47829 Long Marston
 47830 Crewe Basford Hall
 47841 Barrow Hill
 47972 Carnforth

Class 55

55016 Peak Rail

Class 56

56003 Nene Valley Railway
 56006 Barrow Hill
 56007 Crewe EMD

56009 Brush Traction Loughborough
 56011 Long Marston
 56018 Wembley Yard
 56021 Long Marston
 56022 Weardale Railway
 56025 Immingham
 56027 Immingham
 56031 Wembley Yard
 56032 Old Oak Common
 56033 Healey Mills
 56037 Old Oak Common
 56038 Wembley Yard
 56041 Healey Mills
 56043 Immingham
 56046 Toton Compound
 56048 Healey Mills
 56049 Old Oak Common
 56051 Old Oak Common
 56052 Immingham
 56053 Healey Mills
 56054 Ferrybridge
 56055 Healey Mills
 56056 Healey Mills
 56058 Old Oak Common
 56059 Old Oak Common
 56060 Old Oak Common
 56062 Margam
 56064 Immingham
 56065 Wembley Yard
 56067 Ferrybridge
 56068 Healey Mills
 56069 Wembley Yard
 56070 Old Oak Common
 56071 Old Oak Common
 56072 Healey Mills
 56073 Toton Compound
 56074 Old Oak Common
 56076 Immingham
 56077 Crewe DMD
 56078 Wembley Yard
 56079 Healey Mills
 56081 Old Oak Common
 56082 Immingham
 56083 Ferrybridge
 56084 Immingham
 56085 Thornaby
 56086 Immingham
 56087 Wembley Yard
 56088 Thornaby
 56089 Immingham
 56090 Old Oak Common
 56091 Wembley Yard
 56093 Healey Mills
 56094 Old Oak Common
 56095 Old Oak Common
 56096 Old Oak Common
 56099 Healey Mills
 56100 Margam
 56101 Immingham
 56102 Thornaby
 56103 Old Oak Common
 56104 Old Oak Common
 56105 Old Oak Common
 56106 Wembley Yard
 56107 Ferrybridge
 56108 Thornaby
 56109 Ferrybridge
 56110 Healey Mills
 56111 Thornaby
 56112 Old Oak Common
 56113 Old Oak Common
 56114 Immingham
 56115 Wembley Yard
 56116 Healey Mills
 56117 Wembley Yard
 56118 Old Oak Common

56119 Healey Mills
 56120 Ferrybridge
 56127 Thornaby
 56128 Nene Valley Railway
 56129 Thornaby
 56133 Old Oak Common
 56134 Healey Mills
 56301 Brush Traction Loughborough
 56302 Brush Traction Loughborough

Class 57

57001 Crewe LNWR
 57002 Glasgow Works
 57003 Crewe Gresty Bridge

Class 58

58001 Barrow Hill
 58002 Eastleigh
 58003 Toton Compound
 58004 Eastleigh
 58005 Toton
 58006 Eastleigh
 58007 Eastleigh
 58008 Toton Compound
 58009 Eastleigh
 58010 Eastleigh
 58011 Eastleigh
 58012 Toton Compound
 58013 Eastleigh
 58014 Toton Compound
 58016 Old Oak Common
 58017 Eastleigh
 58018 Eastleigh
 58019 Toton Compound
 58021 Eastleigh
 58022 Crewe DMD
 58023 Toton Compound
 58026 Eastleigh
 58028 Toton Compound
 58032 Eastleigh
 58033 Eastleigh
 58034 Eastleigh
 58035 Wembley Yard
 58036 Toton Compound
 58037 Eastleigh
 58040 Eastleigh
 58042 Eastleigh
 58045 Old Oak Common
 58046 Eastleigh
 58048 Old Oak Common
 58049 Eastleigh

Class 60

60001 Toton Compound
 60003 Toton
 60004 Toton
 60006 Toton
 60008 Toton Compound
 60011 Toton
 60015 Toton
 60019 Toton
 60022 Toton
 60023 Toton
 60027 Toton
 60030 Toton
 60032 Toton
 60033 Toton
 60034 Toton
 60036 Toton Compound
 60037 Toton
 60038 Toton
 60050 Toton
 60053 Toton
 60055 Toton
 60057 Toton Compound

60058 Toton
 60061 Eastleigh
 60064 Toton
 60066 Toton
 60067 Toton
 60069 Toton Compound
 60070 Toton Compound
 60078 Toton
 60080 Toton
 60081 Toton
 60086 Toton
 60088 Toton
 60089 Toton
 60090 Toton
 60095 Toton
 60097 Toton
 60098 Toton Compound
 60500 Toton

Class 66

66031 Toton
 66131 Toton

Class 67

67008 Toton
 67010 Toton
 67018 Toton

Class 73

73103 Meldon
 73104 Allely's Studley
 73105 Battlefield Line
 73114 Battlefield Line
 73117 Meldon
 73134 Weardale Railway
 73139 Weardale Railway
 73201 St Leonards
 73203 St Leonards
 73207 Tonbridge West Yard
 73211 Stewarts Lane

Class 86

86205 Long Marston
 86212 East Ham
 86215 Long Marston
 86217 Long Marston
 86218 Long Marston
 86223 Long Marston
 86226 Long Marston
 86228 Long Marston
 86229 Long Marston
 86230 Long Marston
 86231 Long Marston
 86232 Long Marston
 86233 Crewe EMD
 86234 Long Marston
 86235 Long Marston
 86242 Long Marston
 86245 Long Marston
 86246 Long Marston
 86247 Long Marston
 86248 Long Marston
 86250 Long Marston
 86251 Long Marston
 86258 Long Marston
 86260 Long Marston
 86424 Crewe LNWR
 86602 Crewe LNWR
 86623 Crewe LNWR
 86633 Crewe LNWR
 86635 Crewe Basford Hall

Class 87

87003 Long Marston
 87004 Long Marston

87006 Long Marston
 87009 Long Marston
 87010 Crewe LNWR
 87011 Long Marston
 87013 Long Marston
 87014 Long Marston
 87017 Long Marston
 87018 Long Marston
 87020 Long Marston
 87021 Long Marston
 87022 Crewe LNWR
 87023 Long Marston
 87025 Long Marston
 87027 Long Marston
 87028 Crewe LNWR
 87029 Long Marston
 87030 Long Marston
 87031 Tyseley
 87032 Long Marston
 87033 Long Marston
 87034 Long Marston

Class 90

90017 Crewe EMD
 90022 Crewe EMD
 90023 Crewe EMD
 90025 Crewe EMD
 90027 Crewe EMD
 90030 Crewe EMD
 90031 Crewe EMD
 90032 Crewe EMD
 90033 Crewe EMD
 90034 Crewe EMD
 90037 Crewe EMD
 90038 Crewe EMD
 90039 Crewe EMD
 90040 Crewe EMD
 90050 Crewe EMD

Class 92

92006 Crewe EMD
 92008 Crewe EMD
 92013 Crewe EMD
 92014 Crewe EMD
 92018 Crewe EMD
 92020 Brush Traction Loughborough
 92021 Brush Traction Loughborough
 92023 Crewe EMD
 92024 Crewe EMD
 92025 Crewe EMD
 92027 Crewe EMD
 92031 Crewe EMD
 92032 Brush Traction Loughborough
 92033 Crewe EMD
 92035 Crewe EMD
 92037 Dollands Moor
 92040 Brush Traction Loughborough
 92044 Brush Traction Loughborough
 92045 Brush Traction Loughborough
 92046 Brush Traction Loughborough